

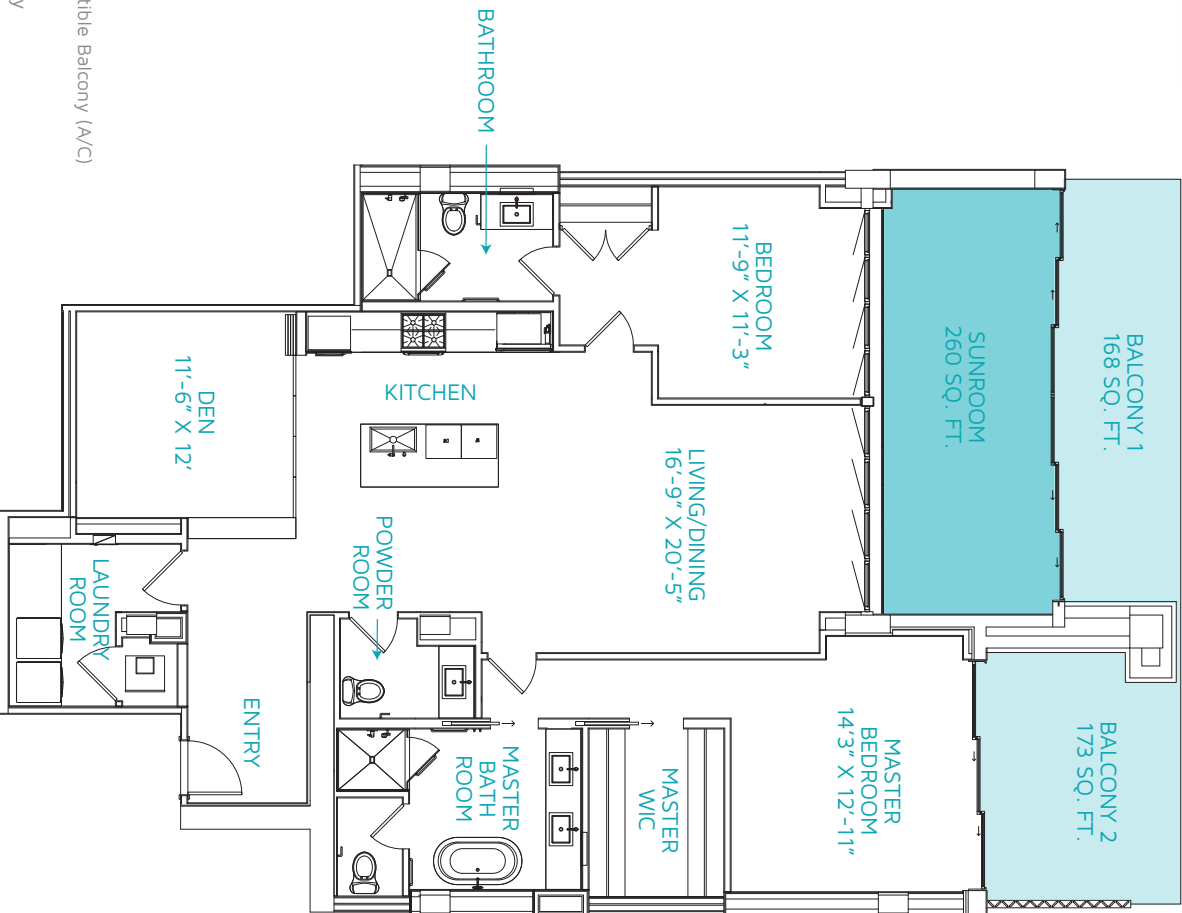
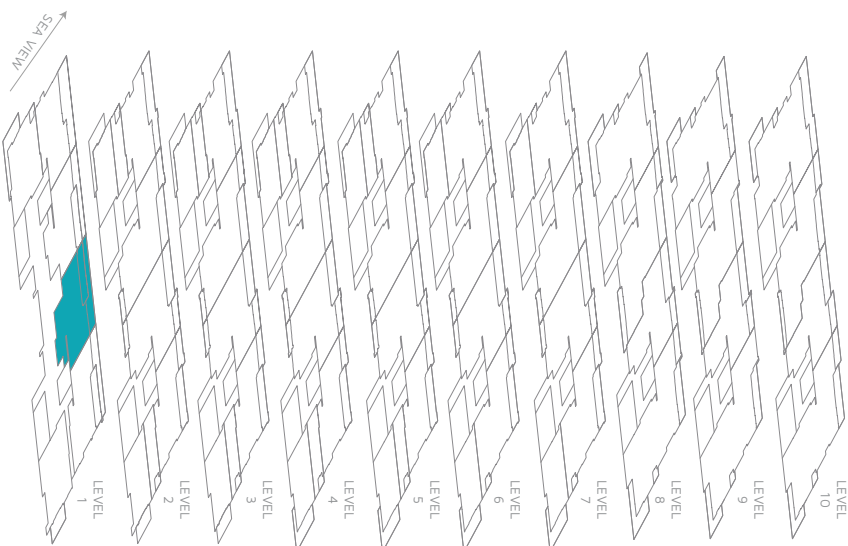


FLOOR PLAN

 Balcony
 Convertible Balcony (A/C)



<h2>N101</h2>	<p>LEVEL 1 2 BEDROOM + DEN/ 2.5 BATH</p>	<p>Total sq. ft. - 2,300 Unit sq. ft. - 1,699 Terrace sq. ft. - 341 Convertible living sq. ft. - 260</p>	<p>White Interior Palette</p>
---------------	---	--	---



N101

FEATURES

- Interior design by Guerin Glass Architects
- Direct entry into open kitchen and great room
- Hurricane-rated aluminium doors and windows
- Convertible NanaWall, folding doors for seamless indoor/outdoor living
- 10'10" ceiling

UTILITIES

- 100% backup power via dedicated 750 kVA generator
- 27% reduction in energy usage over baseline comparison
- Gas tankless water heater

GREAT ROOM & TERRACE

- Stacking, sliding doors that maximise open space to the terrace
- Lindsey Adelman chandeliers
- Modernist ceiling fans

KITCHEN

- Guerin Glass custom-designed cabinets with soft-close hardware
- 1 ¼"-thick Statuarietto, white, honed-finish countertop
- 3/4"-thick Statuarietto, white, honed-finish backsplash
- Kohler Purist series faucet
- Stainless steel undermount sink with ¾ HP garbage disposal
- Miele 24" fully integrated dishwasher
- Sub-Zero 36" built-in over-and-under fridge/freezer with icemaker
- Sub-Zero 24" under-counter wine refrigerator (46 bottle capacity)
- Miele 30" 4-burner gas cooktop with stainless steel finish and frame and hood
- Miele 30" PureLine series convection oven
- Miele 30" PureLine series warming drawer
- Miele 24" PureLine series microwave

LAUNDRY

- LG Ultra Large 4.3 cu. ft. frontload washer
- LG Steam 7.4 cu. ft. frontload gas dryer

MASTER SUITE & BATH

- Custom feature wall in suite and bath
- Walk-in closet with custom built-in shelving system
- Waterworks Flyte series plumbing fixtures and accessories
- Kohler Ladena series undermount sink
- Neptune Amaze series free-standing soaking bathtub
- 1 ¼"-thick Statuarietto white marble, honed-finish countertop
- Toto Drake II toilet in separate water closet

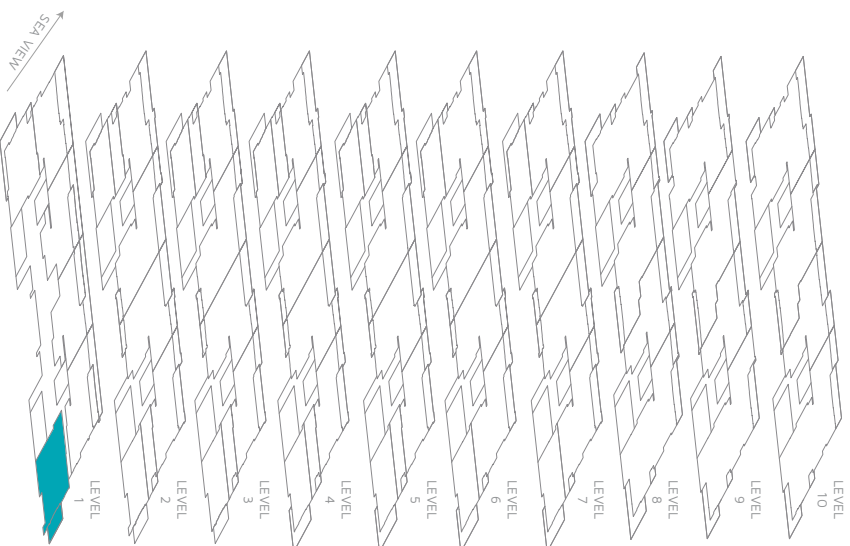
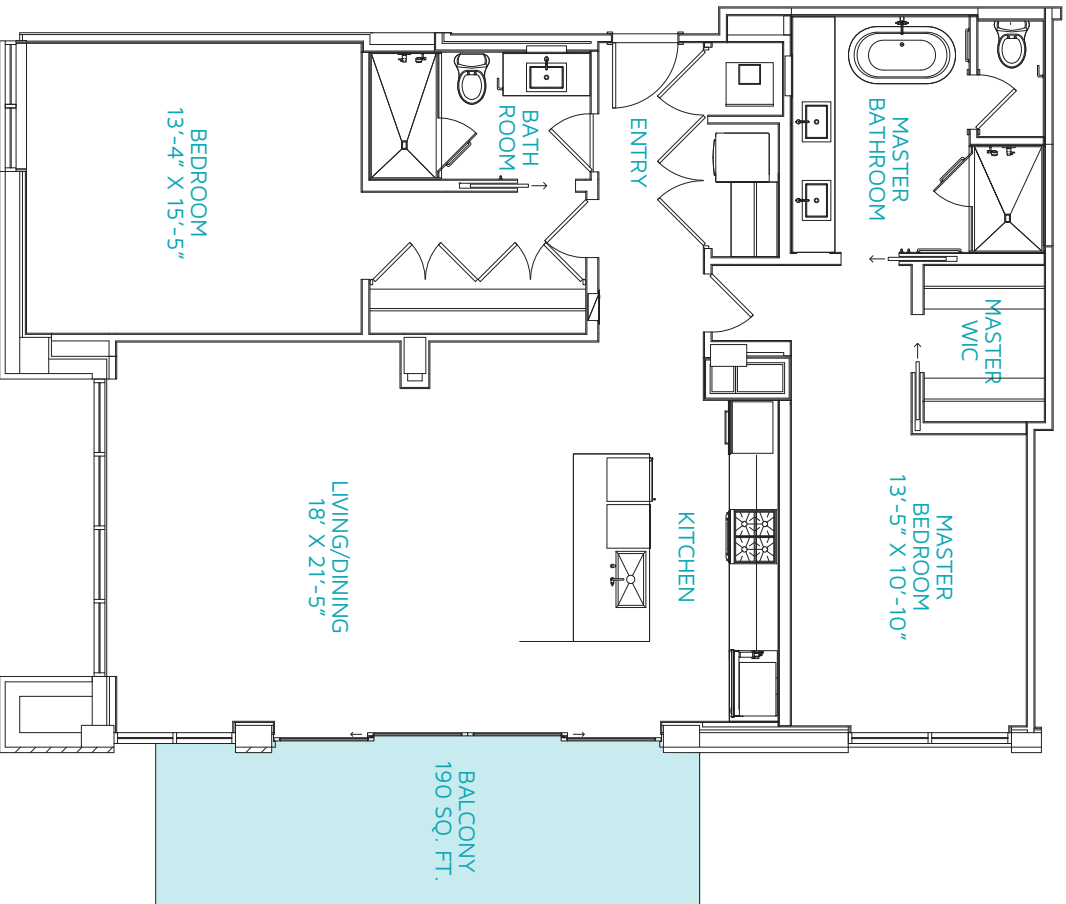
SECONDARY BEDROOMS & BATHS

- Closet with custom built-in shelving system
- 1 ¼"-thick Statuarietto white marble, honed-finish countertop
- Waterworks Flyte series plumbing fixtures and accessories
- Toto Drake II toilet

2B-3 Your eligibility for purchase will depend on your state of residency. This is not intended to be an offer to sell nor a solicitation of offers to buy real estate and/or securities to residents of any jurisdiction unless exemptions from registration are available in the applicable jurisdiction.

FLOOR PLAN

 Balcony



N103	LEVEL 1 2 BEDROOM/ 2 BATH	Total sq. ft. - 1,722 Unit sq. ft. - 1,532 Terraces sq. ft. - 190	White Interior Palette
-------------	---------------------------------	--	------------------------------

N103

FEATURES

- Interior design by Guerin Glass Architects
- Direct entry into open kitchen and great room
- Hurricane-rated aluminium doors and windows
- 10'10" ceiling

UTILITIES

- 100% backup power via dedicated 750 kVA generator
- 27% reduction in energy usage over baseline comparison
- Gas tankless water heater

GREAT ROOM & TERRACE

- Stacking, sliding doors that maximise open space to the terrace
- Lindsey Adelman chandeliers
- Modernist ceiling fans

KITCHEN

- Guerin Glass custom-designed cabinets with soft-close hardware
- 1 ¼"-thick Statuarietto, white, honed-finish countertop
- 3/4"-thick Statuarietto, white, honed-finish backsplash
- Kohler Purist series faucet
- Stainless steel undermount sink with ¾ HP garbage disposal
- Miele 24" fully integrated dishwasher
- Sub-Zero 36" built-in over-and-under fridge/freezer with icemaker
- Sub-Zero 24" undercounter wine refrigerator (46-bottle capacity)
- Miele 30" 4-burner gas cooktop with stainless steel finish and frame and hood
- Miele 30" PureLine series convection oven
- Miele 30" PureLine series warming drawer
- Miele 24" PureLine series microwave

LAUNDRY

- LG Ultra Large 4.3 cu. ft. frontload washer
- LG Steam 7.4 cu. ft. frontload gas dryer

MASTER SUITE & BATH

- Custom feature wall in suite and bath
- Walk-in closet with custom built-in shelving system
- Waterworks Flyte series plumbing fixtures and accessories
- Kohler Ladena series undermount sink
- Neptune Amaze series free-standing soaking bathtub
- 1 ¼"-thick Statuarietto white marble, honed-finish countertop
- Toto Drake II toilet in separate water closet

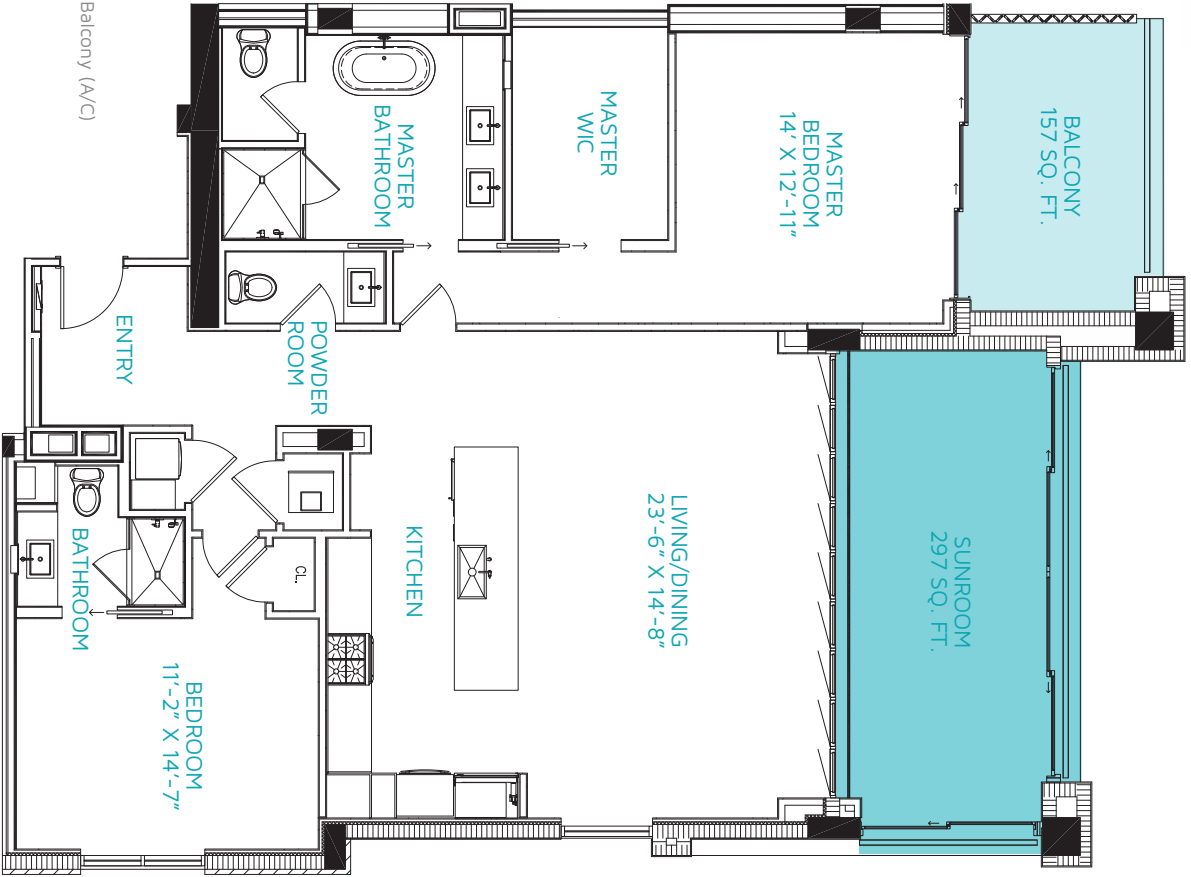
SECONDARY BEDROOMS & BATHS

- Closet with custom built-in shelving system
- 1 ¼"-thick Statuarietto white marble, honed-finish countertop
- Waterworks Flyte series plumbing fixtures and accessories
- Toto Drake II toilet

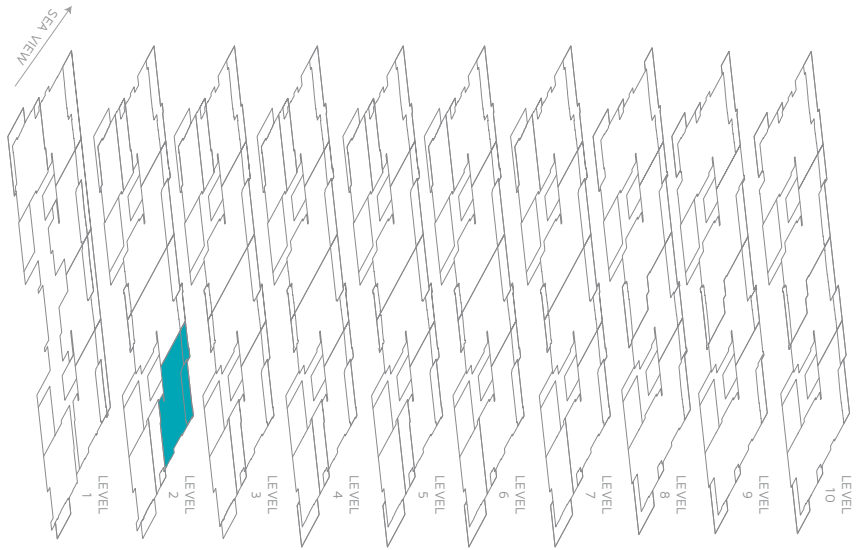
2B-2A Your eligibility for purchase will depend on your state of residency. This is not intended to be an offer to sell nor a solicitation of offers to buy real estate and/or securities to residents of any jurisdiction unless exemptions from registration are available in the applicable jurisdiction.

FLOOR PLAN

Convertible Balcony (A/C)
 Balcony



N202	LEVEL 2 2 BEDROOM/ 2.5 BATH	Total sq. ft. - 2036 Unit sq. ft. - 1,582 Terraces sq. ft. - 157 Convertible living sq. ft. - 297	White Interior Palette
-------------	-----------------------------------	---	------------------------------



N202

FEATURES

- Interior design by Guerin Glass Architects
- Direct entry into open kitchen and great room
- Hurricane-rated aluminium doors and windows
- Convertible NanaWall, folding doors for seamless indoor/outdoor living
- 9' 6" ceiling

UTILITIES

- 100% backup power via dedicated 750 kVA generator
- 27% reduction in energy usage over baseline comparison
- Gas tankless water heater

GREAT ROOM & TERRACE

- Stacking, sliding doors that maximise open space to the terrace
- Lindsey Adelman chandeliers
- Modernist ceiling fans

KITCHEN

- Guerin Glass custom-designed cabinets with soft-close hardware
- 1 ¼"-thick Statuarietto marble, white, honed-finish countertop
- ¾" thick Statuarietto marble, white, honed-finish backsplash
- Kohler Purist series faucet
- Stainless steel undermount sink with ¾ HP garbage disposal
- Miele 24" fully integrated dishwasher
- Sub-Zero 36" built-in over-and-under fridge/freezer with icemaker
- Sub-Zero 24" undercounter wine refrigerator (46 bottle capacity)
- Miele 30" 4-burner gas cooktop with stainless steel finish and frame and hood
- Miele 30" PureLine series convection oven
- Miele 30" PureLine series warming drawer
- Miele 24" PureLine series microwave

LAUNDRY

- LG Ultra Large 4.3 cu. ft. frontload washer
- LG Steam 7.4 cu. ft. frontload gas dryer

MASTER SUITE & BATH

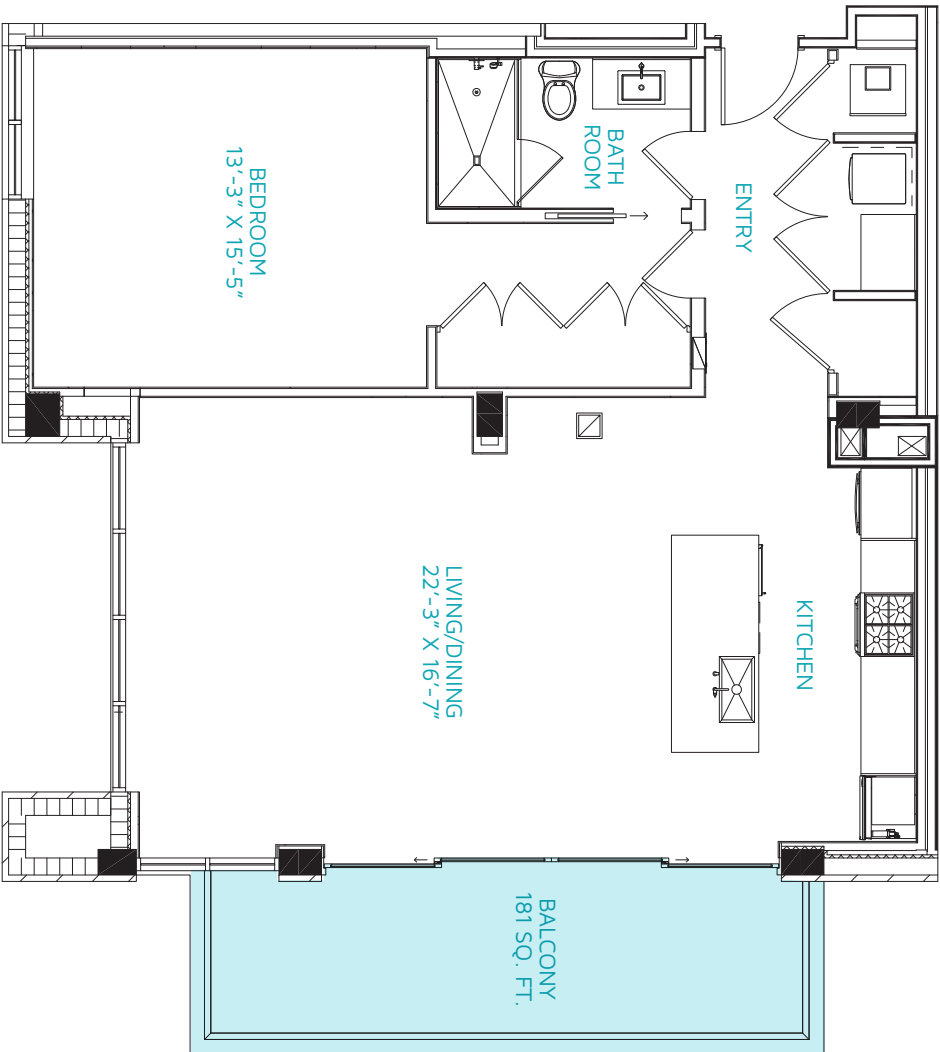
- Custom feature wall in suite and bath
- Walk-in closet with custom built-in shelving system
- Waterworks Flyte series plumbing fixtures and accessories
- Kohler Ladena series undermount sink
- Neptune Amaze series free-standing soaking bathtub
- 1 ¼"-thick Statuarietto white marble, honed-finish countertop
- Toto Drake II toilet in separate water closet

SECONDARY BEDROOMS & BATHS

- Closet with custom built-in shelving system
- 1 ¼"-thick Statuarietto white marble, honed-finish countertop
- Waterworks Flyte series plumbing fixtures and accessories
- Toto Drake II toilet

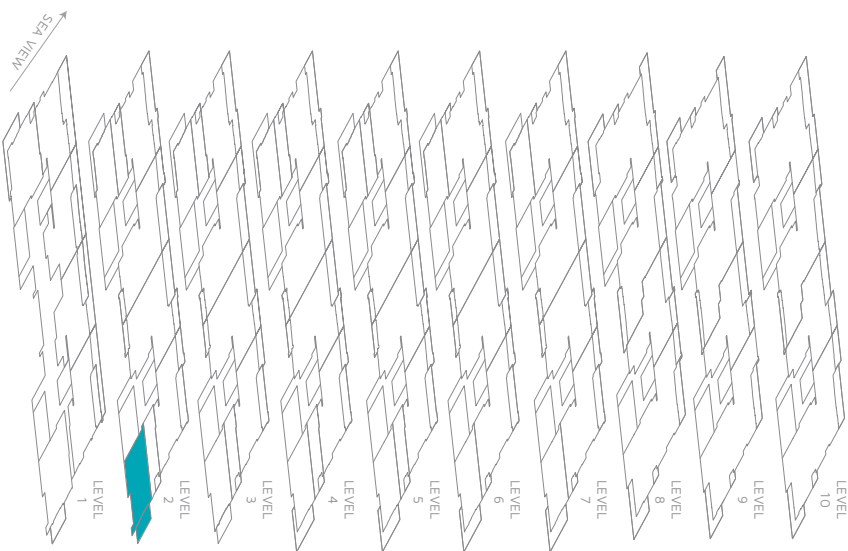
2B-1A Your eligibility for purchase will depend on your state of residency. This is not intended to be an offer to sell nor a solicitation of offers to buy real estate and/or securities to residents of any jurisdiction unless exemptions from registration are available in the applicable jurisdiction.

FLOOR PLAN



Balcony

N204	LEVEL 2 1 BEDROOM/ 1 BATH	Total sq. ft. - 1,310 Unit sq. ft. - 1,129 Terraces sq. ft. - 181	White Interior Palette
-------------	---------------------------------	--	------------------------------



N204

FEATURES

- Interior design by Guerin Glass Architects
- Direct entry into open kitchen and great room
- Hurricane-rated aluminium doors and windows
- 9' 6" ceiling

UTILITIES

- 100% backup power via dedicated 750 kVA generator
- 27% reduction in energy usage over baseline comparison
- Gas tankless water heater

Great Room & Terrace

- Stacking, sliding doors that maximise open space to the terrace
- Lindsey Adelman chandeliers
- Modernist ceiling fans

Kitchen

- Guerin Glass custom-designed cabinets with soft-close hardware
- 1 ¼"-thick Statuarietto white marble, honed-finish countertop
- 3/4"-thick Statuarietto white marble, honed-finish backsplash
- Kohler Purist series faucet
- Stainless steel undermount sink with ¾ HP garbage disposal
- Miele 24" fully integrated dishwasher
- Sub-Zero 36" built-in over-and-under fridge/freezer with icemaker
- Sub-Zero 24" refrigerated/beverage drawers
- Sub-Zero 24" undercounter wine refrigerator (46-bottle capacity)
- Miele 36" 4-burner gas cooktop with stainless steel finish and frame and hood
- Miele 30" PureLine series convection oven
- Miele 24" PureLine series microwave

Laundry

- LG Ultra Large 4.3 cu. ft. frontload washer
- LG Steam 7.4 cu. ft. frontload gas dryer

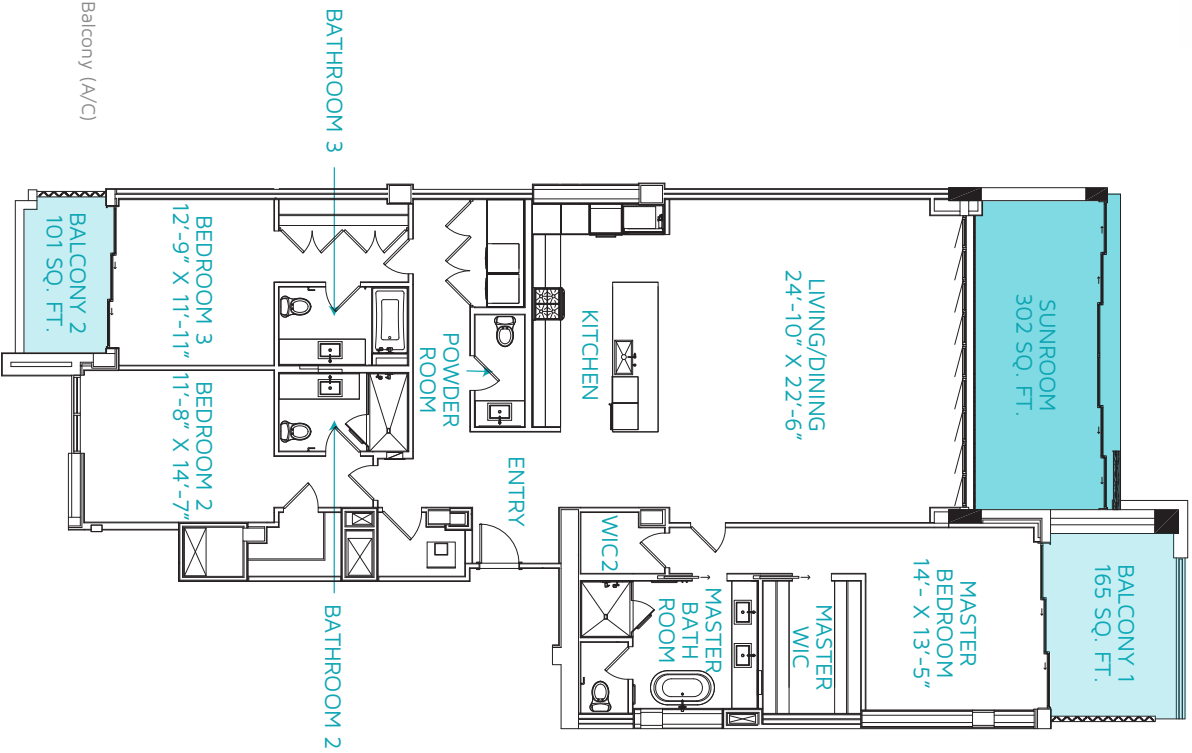
Master Suite & Bath

- Reach-in closet with custom built-in shelving
- Waterworks Flyte series plumbing fixtures and accessories
- Kohler Ladena series undermount sink
- 1 ¼"-thick Statuarietto marble, white, honed-finish countertop

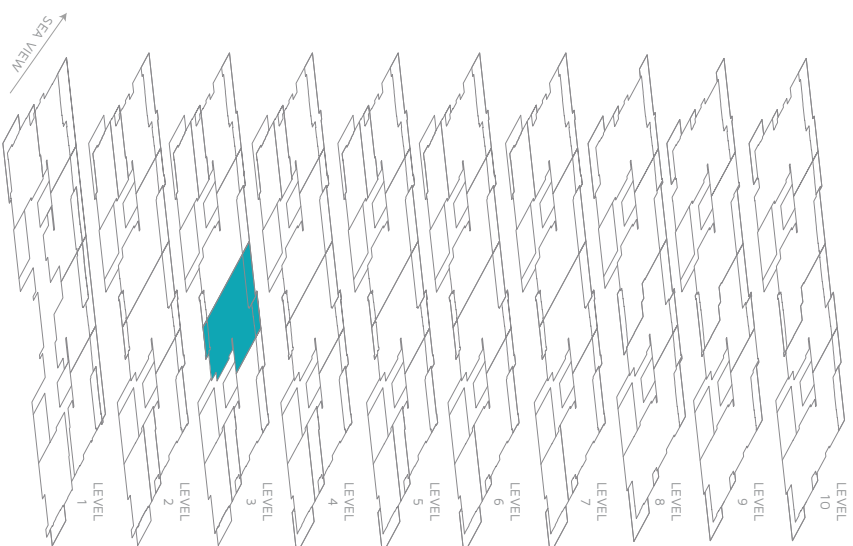
Studio Your eligibility for purchase will depend on your state of residency. This is not intended to be an offer to sell nor a solicitation of offers to buy real estate and/or securities to residents of any jurisdiction unless exemptions from registration are available in the applicable jurisdiction.

FLOOR PLAN

Convertible Balcony (A/C)
 Balcony



N301	LEVEL 3 3 BEDROOM/ 3.5 BATH	Total sq. ft. - 2,944 Unit sq. ft. - 2,376 Terraces sq. ft. - 266 Convertible living sq. ft. - 302	White Interior Palette
-------------	--	--	------------------------------



N301

FEATURES

- Interior design by Guerin Glass Architects
- Direct entry into open kitchen and great room
- Hurricane-rated aluminium doors and windows
- Convertible NanaWall, folding doors for seam-less indoor/outdoor living
- 9'6" ceiling

UTILITIES

- 100% backup power via dedicated 750 kVA generator
- 27% reduction in energy usage over baseline comparison
- Gas tankless water heater

GREAT ROOM & TERRACE

- Stacking, sliding doors that maximise open space to the terrace
- Lindsey Adelman chandeliers
- Modernist ceiling fans

KITCHEN

- Guerin Glass custom-designed cabinets with soft-close hardware
- 1 ¼"-thick Statuarietto white marble, honed-finish countertop
- ¾"-thick Statuarietto whitemarble, honed-finish backsplash
- Kohler Purist series faucet
- Stainless steel undermount sink with ¾ HP garbage disposal
- Miele 24" fully integrated dishwasher
- Sub-Zero 36" built-in over-and-under fridge/freezer with icemaker
- Sub-Zero 24" refrigerated/beverage drawers
- Sub-Zero 24" undercounter wine refrigerator (46 bottle capacity)
- Miele 30" 4-burner gas cooktop with stainless steel finish and frame and hood
- Miele 30" PureLine series convection oven
- Miele 30" PureLine series warming drawer
- Miele 24" PureLine series microwave
- Miele 24" plumbed and built-in coffee maker

LAUNDRY

- LG Ultra Large 4.3 cu. ft. frontload washer
- LG Steam 7.4 cu. ft. frontload gas dryer

MASTER SUITE & BATH

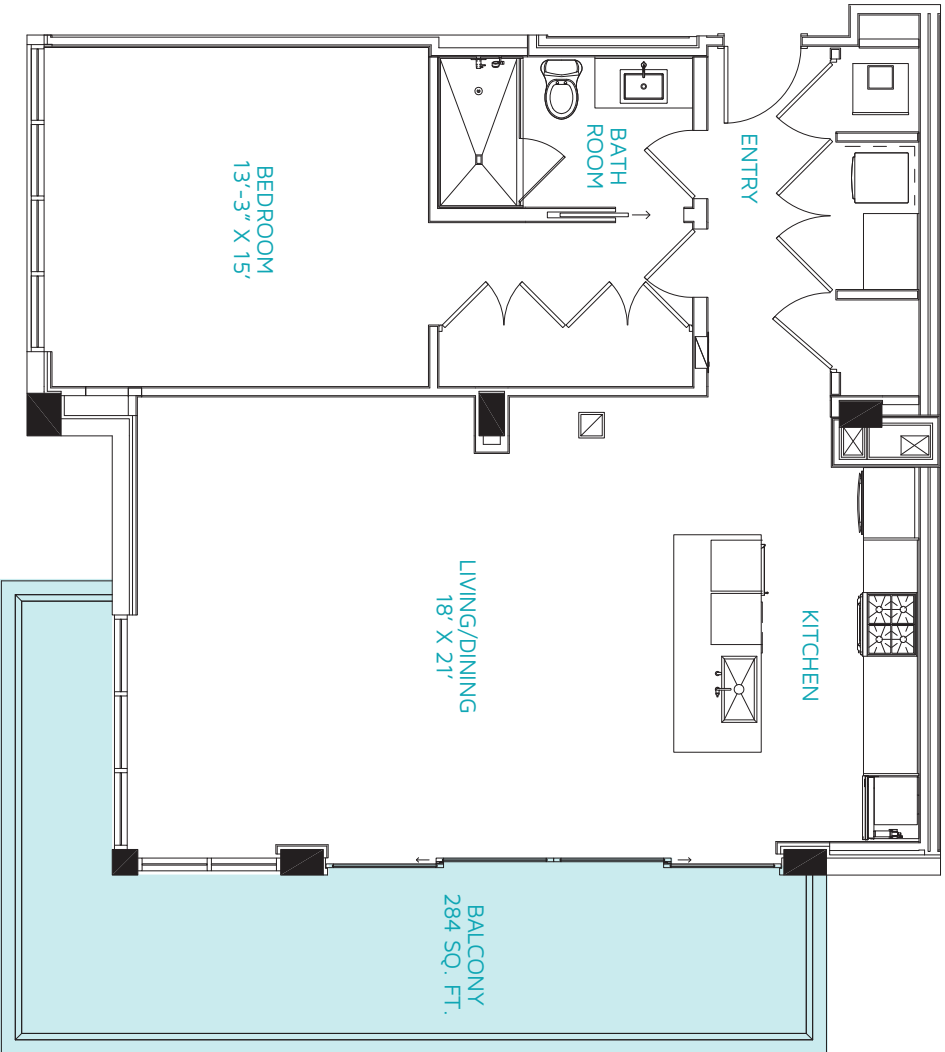
- Custom feature wall in suite and bath
- Walk-in closet with custom built-in shelving system
- Waterworks Flyte series plumbing fixtures and accessories
- Kohler Ladena series undermount sink
- Neptune Amaze series free-standing soaking bathtub
- 1 ¼"-thick Statuarietto white marble, honed-finish countertop
- Toto Drake II toilet in separate water closet

SECONDARY BEDROOMS & BATHS

- 1 ¼"-thick Statuarietto white marble, honed-finish countertop
- Waterworks Flyte series plumbing fixtures and accessories
- Toto Drake II toilet
- Closet with custom built-in shelving system

3B-1 Your eligibility for purchase will depend on your state of residency. This is not intended to be an offer to sell nor a solicitation of offers to buy real estate and/or securities to residents of any jurisdiction unless exemptions from registration are available in the applicable jurisdiction.

FLOOR PLAN



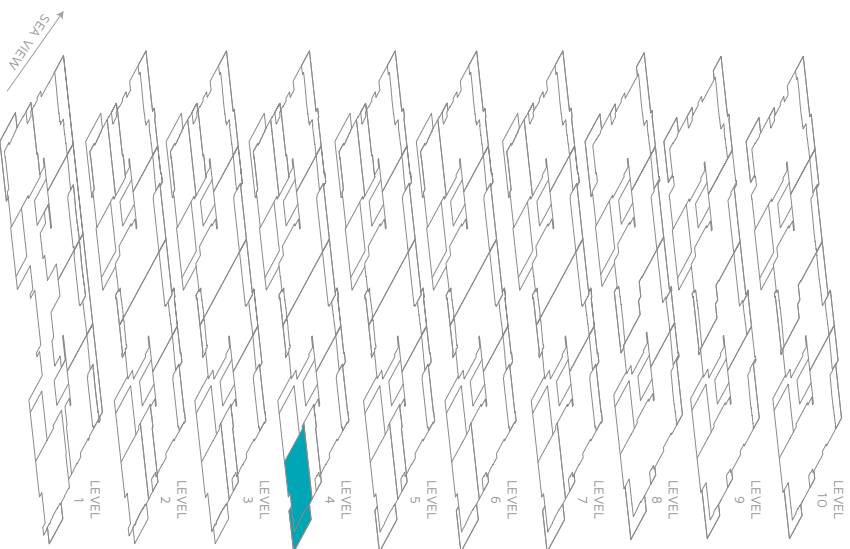
Balcony

N404

LEVEL 4
 1 BEDROOM/
 1 BATH

Total sq. ft. - 1,380
 Unit sq. ft. - 1,096
 Terrace sq. ft. - 284

White
 Interior
 Palette



N404

FEATURES

- Interior design by Guerin Glass Architects
- Direct entry into open kitchen/great room
- Hurricane-rated aluminium doors and windows
- 9' 6" ceiling

UTILITIES

- 100% backup power via dedicated 750 kVA generator
- 27% reduction in energy usage over baseline comparison
- Gas tankless water heater

GREAT ROOM & TERRACE

- Stacking, sliding doors that maximise open space to the terrace
- Lindsey Adelman chandeliers
- Modernist ceiling fans

KITCHEN

- Guerin Glass custom-designed cabinets with soft-close hardware
- 1 ¼"-thick Statuarietto white marble, honed-finish countertop
- ¾"-thick Statuarietto white marble, honed-finish backsplash
- Kohler Purist series faucet
- Sub-Zero 36" built-in over-and-under fridge/freezer with icemaker
- Sub-Zero 24" refrigerated/beverage drawers
- Sub-Zero 24" undercounter wine refrigerator (46-bottle capacity)
- Miele 24" fully integrated dishwasher
- Miele 36" 4-burner gas cooktop with stainless steel finish and frame and hood
- Miele 30" PureLine series convection oven
- Miele 24" PureLine series microwave
- Stainless steel undermount sink with ¾ HP garbage disposal

LAUNDRY



- LG Ultra Large 4.3 cu. ft. frontload washer
- LG Steam 7.4 cu. ft. frontload gas dryer

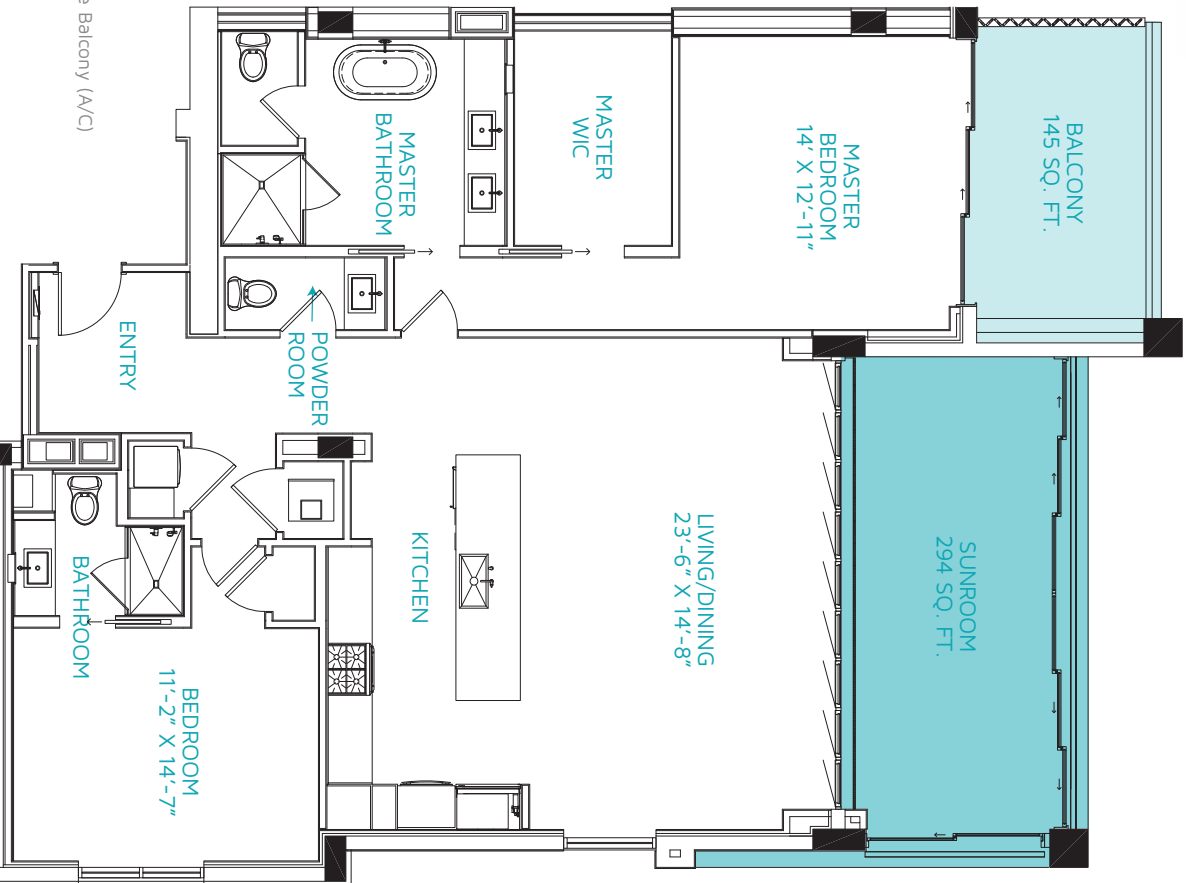
MASTER SUITE & BATH

- Reach-in closet with custom built-in shelving
- Waterworks Flyte series plumbing fixtures and accessories
- Kohler Ladena series undermount sink
- 1 ¼"-thick Statuarietto white marble, honed-finish countertop

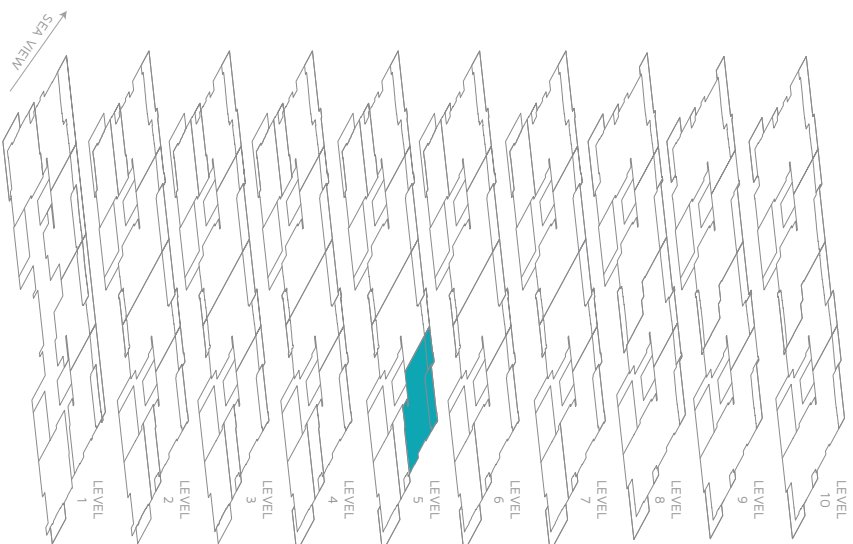
^{1B} Your eligibility for purchase will depend on your state of residency. This is not intended to be an offer to sell nor a solicitation of offers to buy real estate and/or securities to residents of any jurisdiction unless exemptions from registration are available in the applicable jurisdiction.

FLOOR PLAN

 Convertible Balcony (A/C)
 Balcony



N502	LEVEL 5 2 BEDROOM/ 2.5 BATH	Total sq. ft. - 2,018 Unit sq. ft. - 1,579 Terrace sq. ft. - 145 Convertible living sq. ft. - 294	White Interior Palette
-------------	--	---	------------------------------



N502

FEATURES

- Interior design by Guerin Glass Architects
- Direct entry into open kitchen and great room
- Hurricane-rated aluminium doors and windows
- Convertible NanaWall, folding doors for seamless indoor/outdoor living
- 9' 6" ceiling

UTILITIES

- 100% backup power via dedicated 750 kVA generator
- 27% reduction in energy usage over baseline comparison
- Gas tankless water heater

Great Room & Terrace

- Stacking, sliding doors that maximise open space to the terrace
- Lindsey Adelman chandeliers
- Modernist ceiling fans

Kitchen

- Guerin Glass custom-designed cabinets with soft-close hardware
- 1 ¼"-thick Statuarietto white marble, honed-finish countertop
- ¾"-thick Statuarietto white marble, honed-finish backsplash
- Kohler Purist series faucet
- Miele 24" fully integrated dishwasher
- Stainless steel undermount sink with ¾ HP garbage disposal
- Sub-Zero 36" built-in over-and-under fridge/freezer with icemaker
- Sub-Zero 24" undercounter wine refrigerator (46 bottle capacity)
- Miele 30" 4-burner gas cooktop with stainless steel finish and frame and hood
- Miele 30" PureLine series convection oven
- Miele 30" PureLine series warming drawer
- Miele 24" PureLine series microwave

Laundry

- LG Ultra Large 4.3 cu. ft. frontload washer
- LG Steam 7.4 cu. ft. frontload gas dryer

Master Suite & Bath

- Custom feature wall in suite and bath
- Walk-in closet with custom built-in shelving system
- Waterworks Flyte series plumbing fixtures and accessories
- Kohler Ladena series undermount sink
- Neptune Amaze series free-standing soaking bathtub
- 1 ¼"-thick Statuarietto white marble, honed-finish countertop
- Toto Drake II toilet in separate water closet

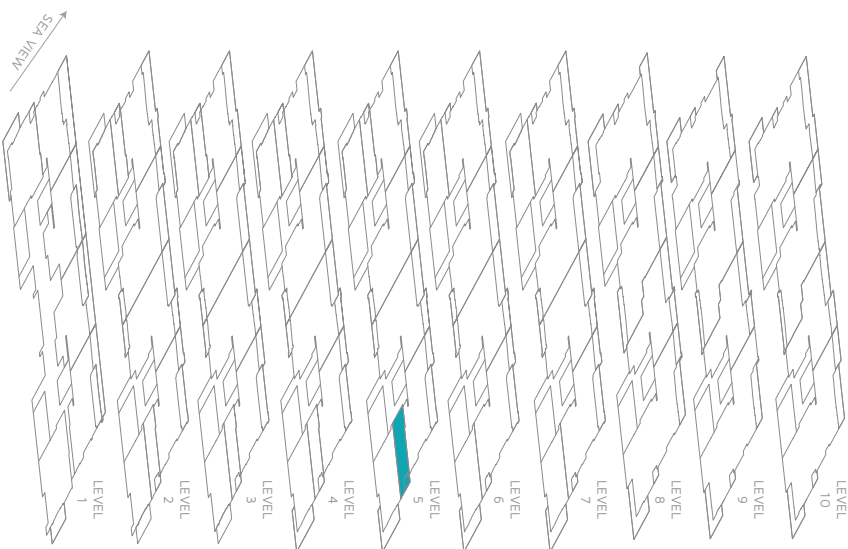
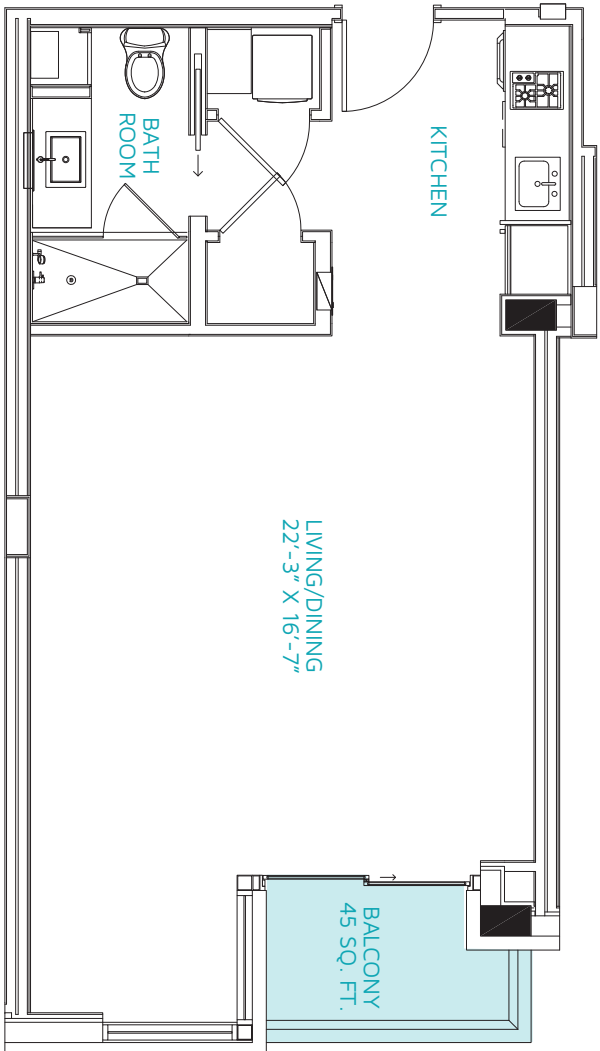
Secondary Bedrooms & Baths

- 1 ¼"-thick Statuarietto white marble, honed-finish countertop
- Waterworks Flyte series plumbing fixtures and accessories
- Toto Drake II toilet
- Closet with custom built-in shelving system

2B-1A Your eligibility for purchase will depend on your state of residency. This is not intended to be an offer to sell nor a solicitation of offers to buy real estate and/or securities to residents of any jurisdiction unless exemptions from registration are available in the applicable jurisdiction.

FLOOR PLAN

 Balcony



N503	LEVEL 5 STUDIO	Total sq. ft. - 601 Unit sq. ft. - 556 Terrace sq. ft. - 45	White Interior Palette
-------------	-------------------	--	------------------------------

N503

FEATURES

- Interior design by Guerin Glass Architects
- Direct entry into open kitchen and living space
- Hurricane-rated aluminium doors and windows
- 9' 6" ceiling

UTILITIES

- 100% backup power via dedicated 750 kVA generator
- 27% reduction in energy usage over baseline comparison
- Gas tankless water heater

LIVING ROOM & TERRACE

- Modernist ceiling fans

KITCHEN

- Guerin Glass custom-designed cabinets with soft-close hardware
- 1 ¼"-thick Statuarietto white marble, honed-finish countertop
- ¾"-thick Statuarietto white marble, honed-finish backsplash
- Kohler Purist series faucet
- Sub-Zero 27" built-in over-and-under fridge/freezer with icemaker
- Wolf 15" 2-Burner gas cooktop with stainless steel finish and frame and 24" hood
- Wolf 24" Transitional drawer
- Miele 18" fully integrated dishwasher
- Stainless steel undermount sink with ¾ HP garbage disposal

LAUNDRY

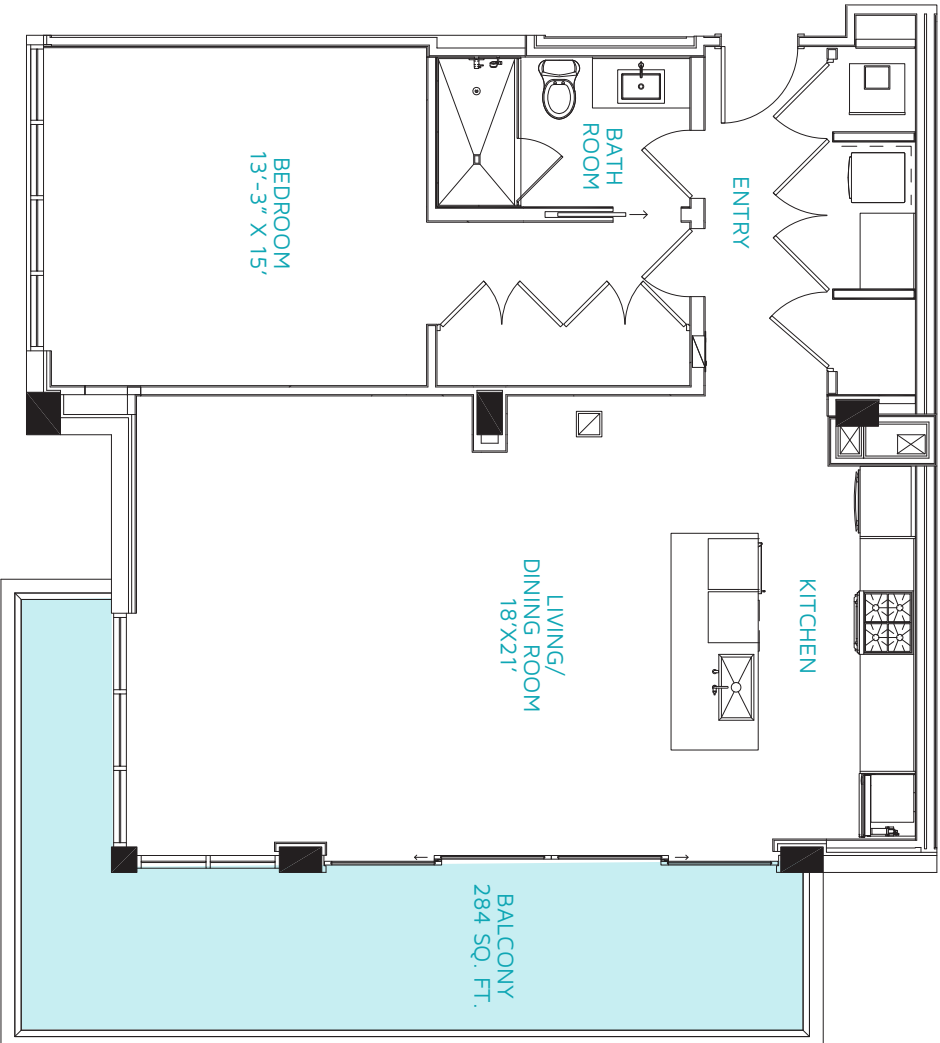
- LG Ultra Large 4.3 cu. ft. frontload washer
- LG Steam 7.4 cu. ft. frontload gas dryer

BATH

- Custom Vanity with marble top
- Waterworks Flyte series plumbing fixtures and accessories

STUDIO Your eligibility for purchase will depend on your state of residency. This is not intended to be an offer to sell nor a solicitation of offers to buy real estate and/or securities to residents of any jurisdiction unless exemptions from registration are available in the applicable jurisdiction.

FLOOR PLAN



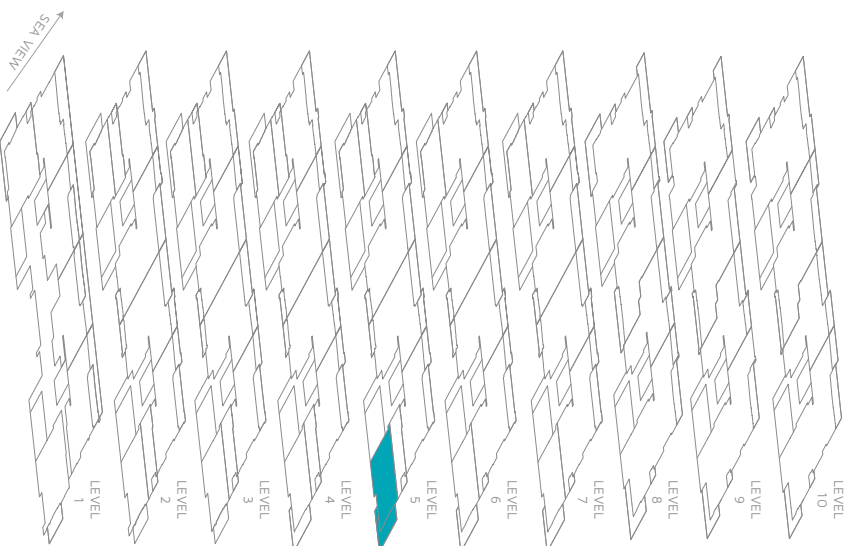
Balcony

N504

LEVEL 5
 1 BEDROOM/
 1 BATH

Total sq. ft. - 1,380
 Unit sq. ft. - 1,096
 Terrace sq. ft. - 284

White
 Interior
 Palette



N504

FEATURES

- Interior design by Guerin Glass Architects
- Direct entry into open kitchen and great room
- Hurricane-rated aluminium doors and windows
- 9' 6" ceiling

UTILITIES

- 100% backup power via dedicated 750 kVA generator
- 27% reduction in energy usage over baseline comparison
- Gas tankless water heater

GREAT ROOM & TERRACE

- Stacking, sliding doors that maximise open space to the terrace
- Lindsey Adelman chandeliers
- Modernist ceiling fans

KITCHEN

- Guerin Glass custom-designed cabinets with soft-close hardware
- 1 ¼"-thick Statuarietto white marble, honed-finish countertop
- ¾"-thick Statuarietto white marble, honed-finish backsplash
- Kohler Purist series faucet
- Sub-Zero 36" built-in over-and-under fridge/freezer with icemaker
- Sub-Zero 24" refrigerated/beverage drawers
- Sub-Zero 24" undercounter wine refrigerator (46-bottle capacity)
- Miele 24" fully integrated dishwasher
- Miele 36" 4-burner gas cooktop with stainless steel finish and frame and hood
- Miele 30" PureLine series convection oven
- Miele 24" PureLine series microwave
- Stainless steel undermount sink with ¾ HP garbage disposal

LAUNDRY



- LG Ultra Large 4.3 cu. ft. frontload washer
- LG Steam 7.4 cu. ft. frontload gas dryer

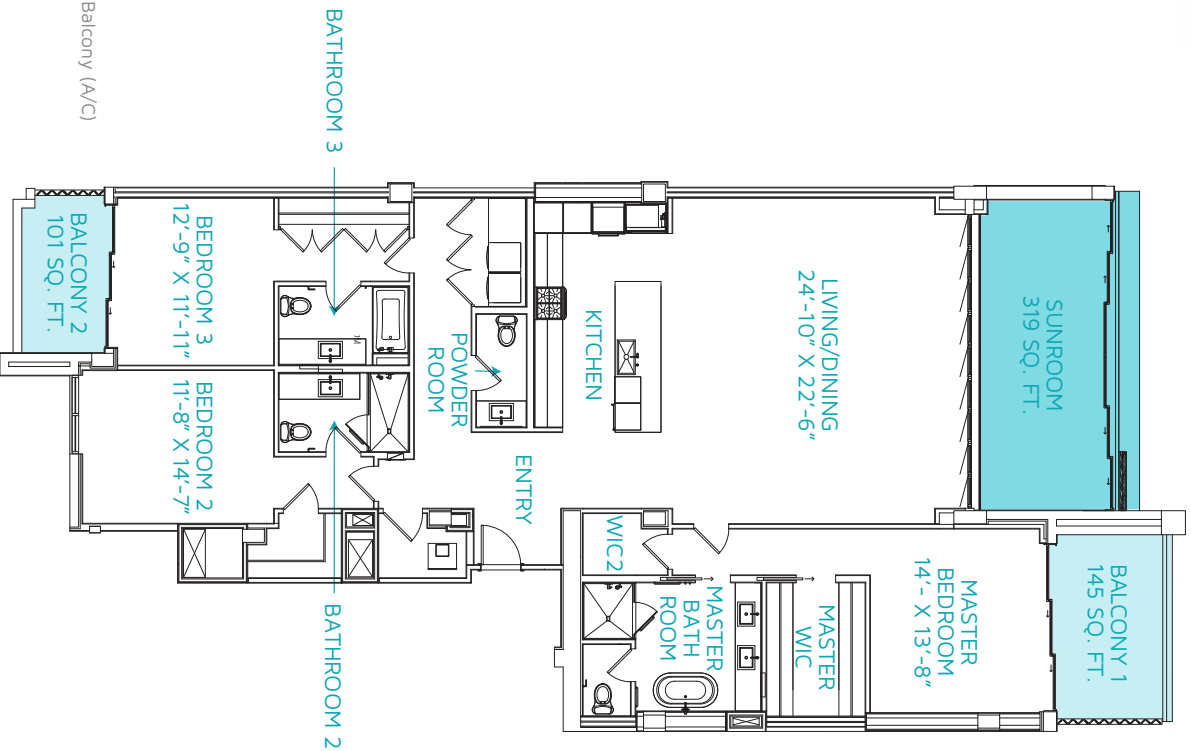
MASTER SUITE & BATH

- Reach-in closet with custom built-in shelving
- Waterworks Flyte series plumbing fixtures and accessories
- Kohler Ladena series undermount sink
- 1 ¼"-thick Statuarietto white marble, honed-finish countertop

^{1B} Your eligibility for purchase will depend on your state of residency. This is not intended to be an offer to sell nor a solicitation of offers to buy real estate and/or securities to residents of any jurisdiction unless exemptions from registration are available in the applicable jurisdiction.

FLOOR PLAN

 Convertible Balcony (A/C)
 Balcony

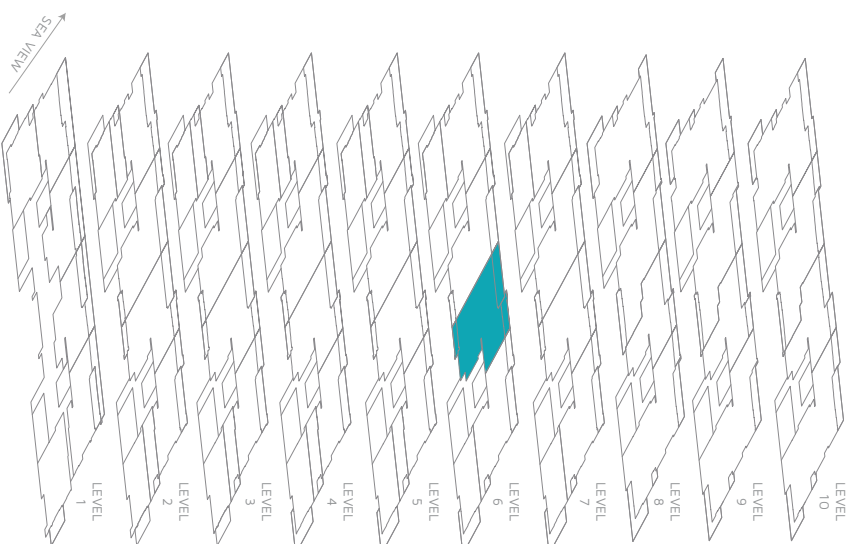


N601

LEVEL 6
**3 BEDROOM/
 3.5 BATH**

Total sq. ft. - 2,941
 Unit sq. ft. - 2,376
 Terraces sq. ft. - 246
 Convertible living sq. ft. - 319

White
 Interior
 Palette



N601

FEATURES

- Interior design by Guerin Glass Architects
- Direct entry into open kitchen and great room
- Hurricane-rated aluminium doors and windows
- Convertible NanaWall, folding doors for seamless indoor/outdoor living
- 9' 6" ceiling

UTILITIES

- 100% backup power via dedicated 750 kVA generator
- 27% reduction in energy usage over baseline comparison
- Gas tankless water heater

GREAT ROOM & TERRACE

- Stacking, sliding doors that maximise open space to the terrace
- Lindsey Adelman chandeliers
- Modernist ceiling fans

KITCHEN

- Guerin Glass custom-designed cabinets with soft-close hardware
- 1 ¼"-thick Statuarietto white marble, honed-finish countertop
- ¾"-thick Statuarietto white marble, honed-finish backsplash
- Kohler Purist series faucet
- Stainless steel undermount sink with ¾ HP garbage disposal
- Miele 24" fully integrated dishwasher
- Sub-Zero 36" built-in over-and-under fridge/freezer with icemaker
- Sub-Zero 24" refrigerated/beverage drawers
- Sub-Zero 24" undercounter wine refrigerator (46-bottle capacity)
- Miele 30" 4-burner gas cooktop with stainless steel finish and frame and hood
- Miele 30" PureLine series convection oven
- Miele 30" PureLine series warming drawer
- Miele 24" PureLine series microwave
- Miele 24" plumbed and built-in coffee maker

LAUNDRY

- LG Ultra Large 4.3 cu. ft. frontload washer
- LG Steam 7.4 cu. ft. frontload gas dryer

MASTER SUITE & BATH


- Custom feature wall in suite and bath
- Walk-in closet with custom built-in shelving
- Neptune Amaze series free-standing soaking bathtub
- Waterworks Flyte series plumbing fixtures and accessories
- Kohler Ladena series undermount sink
- 1 ¼"-thick Statuarietto white marble, honed-finish countertop
- Toto Drake II toilet in separate water closet


SECONDARY BEDROOMS & BATHS

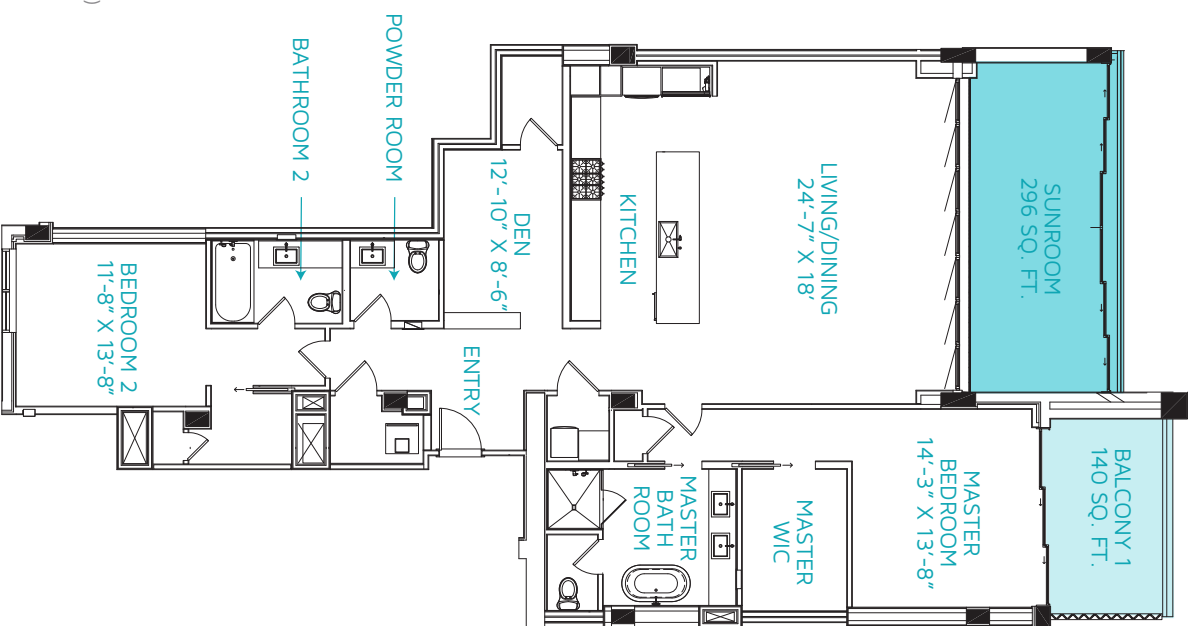
- Closet with custom built-in shelving system
- Waterworks Flyte series plumbing fixtures and accessories
- Toto Drake II toilet
- 1 ¼"-thick Statuarietto white marble, honed-finish countertop

3B-1 Your eligibility for purchase will depend on your state of residency. This is not intended to be an offer to sell nor a solicitation of offers to buy real estate and/or securities to residents of any jurisdiction unless exemptions from registration are available in the applicable jurisdiction.

FLOOR PLAN

 Convertible Balcony (A/C)

 Balcony

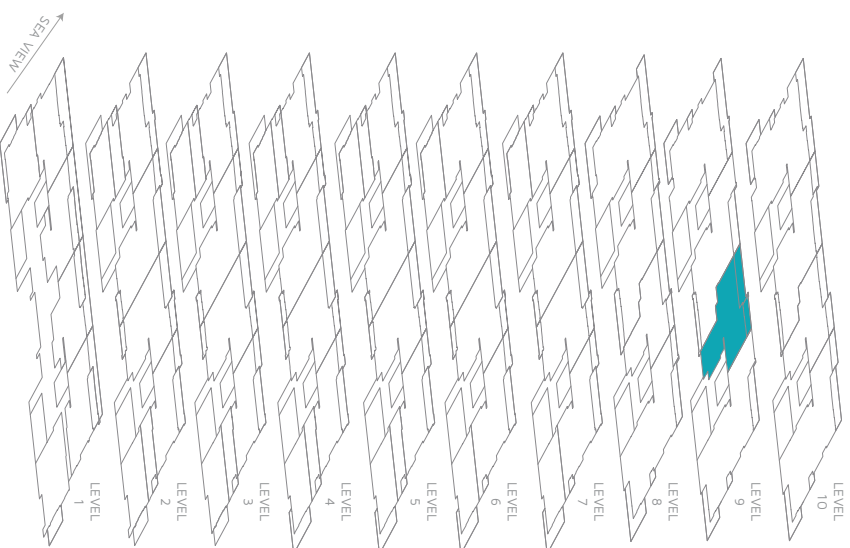


N901

LEVEL 9
 2 BEDROOM +
 DEN/ 2.5 BATH

Total sq. ft. - 2,421
 Unit sq. ft. - 1,985
 Terraces sq. ft. - 140
 Convertible living sq. ft. - 296

White
 Interior
 Palette



N901

FEATURES

- Interior design by Guerin Glass Architects
- Direct entry into open kitchen and great room
- Hurricane-rated aluminium doors and windows
- Convertible NanaWall, folding doors for seamless indoor/outdoor living
- 10' 10" ceiling

UTILITIES

- 100% backup power via dedicated 750 kVA generator
- 27% reduction in energy usage over baseline comparison
- Gas tankless water heater

GREAT ROOM & TERRACE

- Stacking, sliding doors that maximise open space to the terrace
- Lindsey Adelman chandeliers
- Modernist ceiling fans

KITCHEN

- Guerin Glass custom-designed cabinets with soft-close hardware
- 1 ¼"-thick Statuarietto white marble, honed-finish countertop
- ¾"-thick Statuarietto white marble, honed-finish backsplash
- Kohler Purist series faucet
- Stainless steel undermount sink with ¾ HP garbage disposal
- Miele 24" fully integrated dishwasher
- Sub-Zero 36" built-in over-and-under fridge/freezer with icemaker
- Sub-Zero 24" undercounter wine refrigerator (46-bottle capacity)
- Miele 30" 4-burner gas cooktop with stainless steel finish and frame and hood
- Miele 30" PureLine series convection oven
- Miele 30" PureLine series warming drawer
- Miele 24" PureLine series microwave

LAUNDRY

- LG Ultra Large 4.3 cu. ft. frontload washer
- LG Steam 7.4 cu. ft. frontload gas dryer

MASTER SUITE & BATH

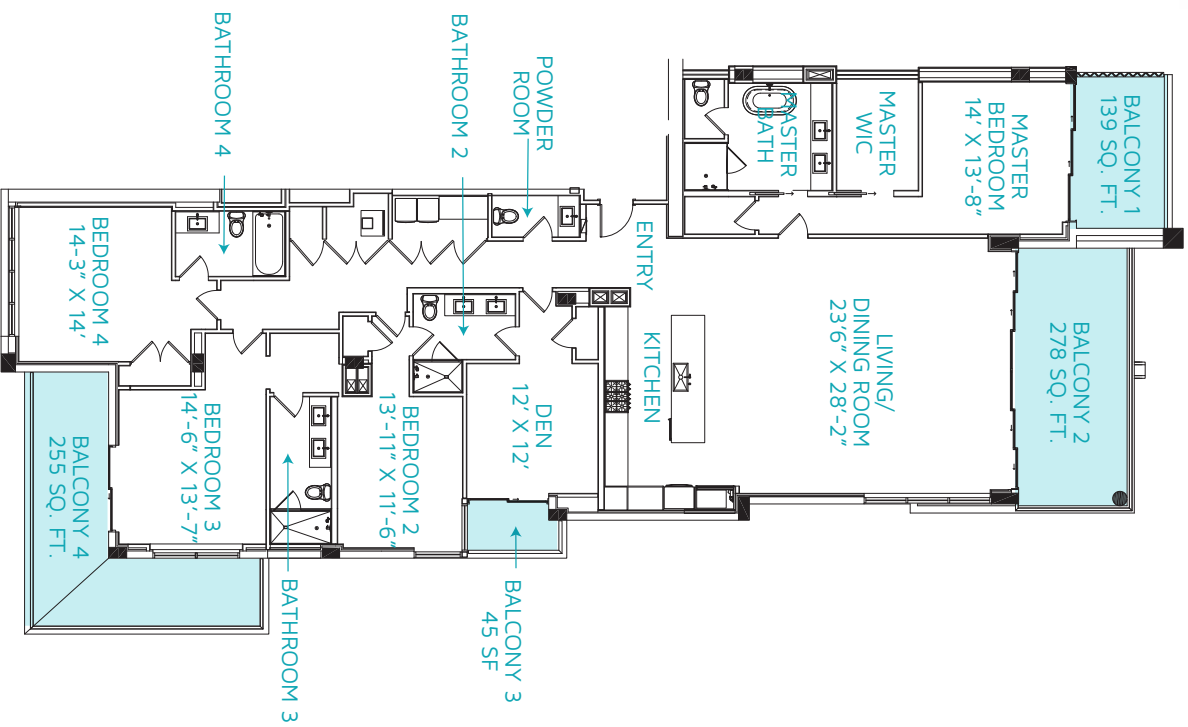
- Custom feature wall in suite and bath
- Walk-in closet with custom built-in shelving system
- Waterworks Flyte series plumbing fixtures and accessories
- Kohler Ladena series undermount sink
- Neptune Amaze series free-standing soaking bathtub
- 1 ¼"-thick Statuarietto white marble, honed-finish countertop
- Toto Drake II toilet in separate water closet

SECONDARY BEDROOMS & BATHS

- 1 ¼"-thick Statuarietto white marble, honed-finish countertop
- Waterworks Flyte series plumbing fixtures and accessories
- Toto Drake II toilet
- Closet with custom built-in shelving system

2B-4 Your eligibility for purchase will depend on your state of residency. This is not intended to be an offer to sell nor a solicitation of offers to buy real estate and/or securities to residents of any jurisdiction unless exemptions from registration are available in the applicable jurisdiction.

FLOOR PLAN



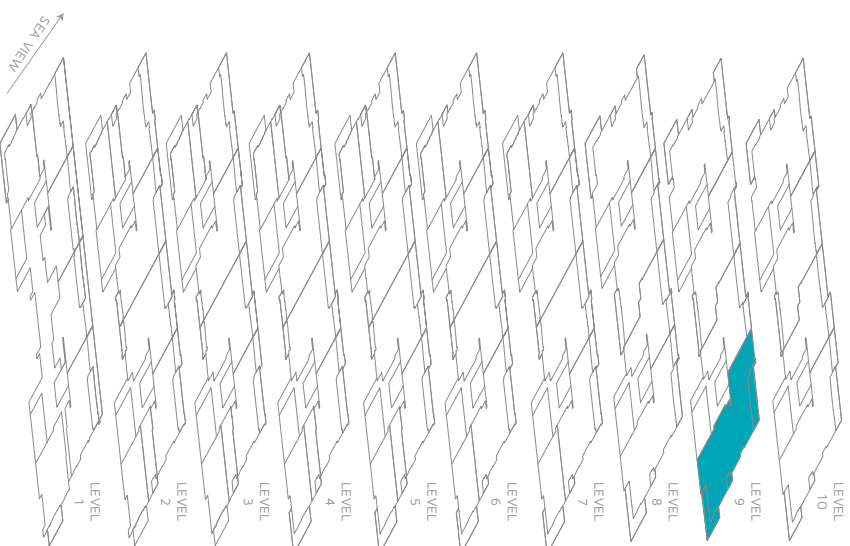
 Balcony

N902

LEVEL 9
 4 BEDROOM +
 DEN/4.5 BATH

Total sq. ft. - 3,868
 Unit sq. ft. - 3,151
 Terraces sq. ft. - 717

White
 Interior
 Palette



N902

FEATURES

- Interior design by Guerin Glass Architects
- Direct entry into open kitchen and great room
- Hurricane-rated aluminium doors and windows
- 10' 10" ceiling

UTILITIES

- 100% backup power via dedicated 750 kVA generator
- 27% reduction in energy usage over baseline comparison
- Gas tankless water heater

GREAT ROOM & TERRACES

- Stacking, sliding doors that maximise open space to the terrace
- Lindsey Adelman chandeliers
- Modernist ceiling fans

KITCHEN

- Guerin Glass custom-designed cabinets with soft-close hardware
- 1 ¼"-thick Statuarietto white marble, honed-finish countertop
- ¾"-thick Statuarietto white marble, honed-finish backsplash
- Kohler Purist series faucet
- Stainless steel undermount sink with ¾ HP garbage disposal
- Miele 24" fully integrated dishwasher
- Sub-Zero 36" built-in over-and-under fridge/freezer with icemaker
- Sub-Zero 24" undercounter wine refrigerator (46-bottle capacity)
- Sub-Zero 24" refrigerated/beverage drawers
- Miele 30" 5-burner gas cooktop with stainless steel finish and frame and hood
- Miele 30" stainless steel, built-in wall cabinet hood
- Miele 30" PureLine series convection oven
- Miele 30" PureLine series warming drawer
- Miele 24" PureLine series microwave
- Miele 24" plumbed and built-in coffee maker

LAUNDRY

- LG Ultra Large 4.3 cu. ft. frontload washer
- LG Steam Dryer 7.4 cu. ft. frontload gas dryer

MASTER SUITE & BATH

- Custom feature wall in suite and bath
- Walk-in closet with custom built-in shelving system
- Waterworks Flyte series plumbing fixtures and accessories
- Kohler Ladena series undermount sink
- Neptune Amaze series free-standing soaking bathtub
- 1 ¼"-thick Statuarietto white marble, honed-finish countertop
- Toto Drake II toilet in separate water closet

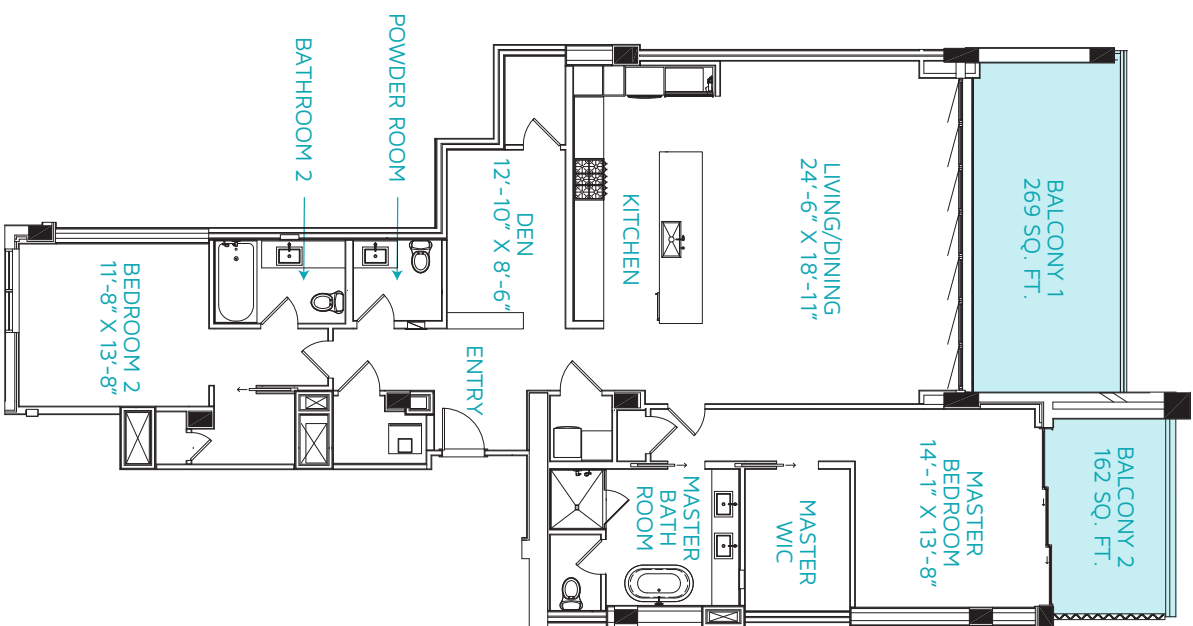
SECONDARY BEDROOMS & BATHS

- 1 ¼"-thick Statuarietto white marble, honed-finish countertop
- Waterworks Flyte series plumbing fixtures and accessories
- Toto Drake II toilet
- Closet with custom built-in shelving system

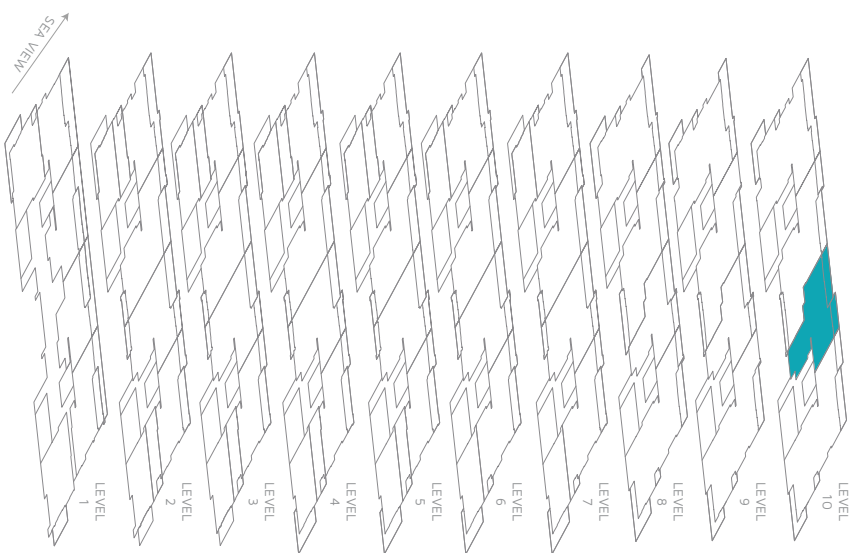
4B-1 Your eligibility for purchase will depend on your state of residency. This is not intended to be an offer to sell nor a solicitation of offers to buy real estate and/or securities to residents of any jurisdiction unless exemptions from registration are available in the applicable jurisdiction.

FLOOR PLAN

 Balcony



N1001	LEVEL 10 2 BEDROOM + DEN/ 2.5 BATH	Total sq. ft. - 2,436 Unit sq. ft. - 2,005 Terraces sq. ft. - 431	White Interior Palette
--------------	--	--	------------------------------



N1001

FEATURES

- Interior design by Guerin Glass Architects
- Direct entry into open kitchen and great room
- Hurricane-rated aluminium doors and windows
- 10' 10" ceiling

UTILITIES

- 100% backup power via dedicated 750 kVA generator
- 27% reduction in energy usage over baseline comparison
- Gas tankless water heater

GREAT ROOM & TERRACE

- Stacking, sliding doors that maximise open space to the terrace
- Lindsey Adelman chandeliers
- Modernist ceiling fans

KITCHEN

- Guerin Glass custom-designed cabinets with soft-close hardware
- 1 ¼"-thick Statuarietto white marble, honed-finish countertop
- ¾"-thick Statuarietto white marble, honed-finish backsplash
- Kohler Purist series faucet
- Stainless steel undermount sink with ¾ HP garbage disposal
- Miele 24" fully integrated dishwasher
- Sub-Zero 36" built-in over-and-under fridge/freezer with icemaker
- Sub-Zero 24" undercounter wine refrigerator (46-bottle capacity)
- Miele 30" 4-burner gas cooktop with stainless steel finish and frame and hood
- Miele 30" PureLine series convection oven
- Miele 30" PureLine series warming drawer
- Miele 24" PureLine series microwave

LAUNDRY

- LG Ultra Large 4.3 cu. ft. frontload washer
- LG Steam 7.4 cu. ft. frontload gas dryer

MASTER SUITE & BATH



- Custom feature wall in suite and bath
- Walk-in closet with custom built-in shelving system
- Waterworks Flyte series plumbing fixtures and accessories
- Kohler Ladena series undermount sink
- Neptune Amaze series free-standing soaking bathtub
- 1 ¼"-thick Statuarietto white marble, honed-finish countertop
- Toto Drake II toilet in separate water closet

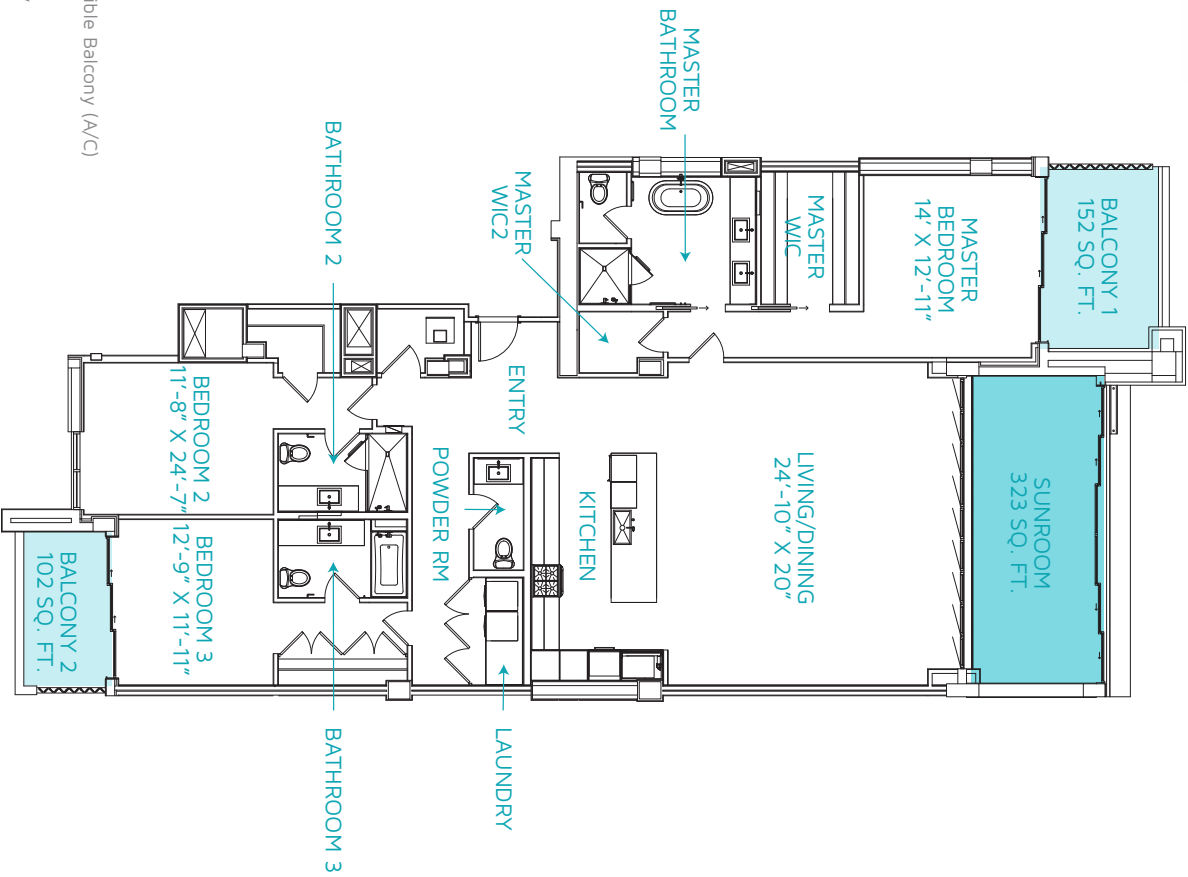
SECONDARY BEDROOMS & BATHS

- 1 ¼"-thick Statuarietto white marble, honed-finish countertop
- Waterworks Flyte series plumbing fixtures and accessories
- Toto Drake II toilet
- Closet with custom built-in shelving system

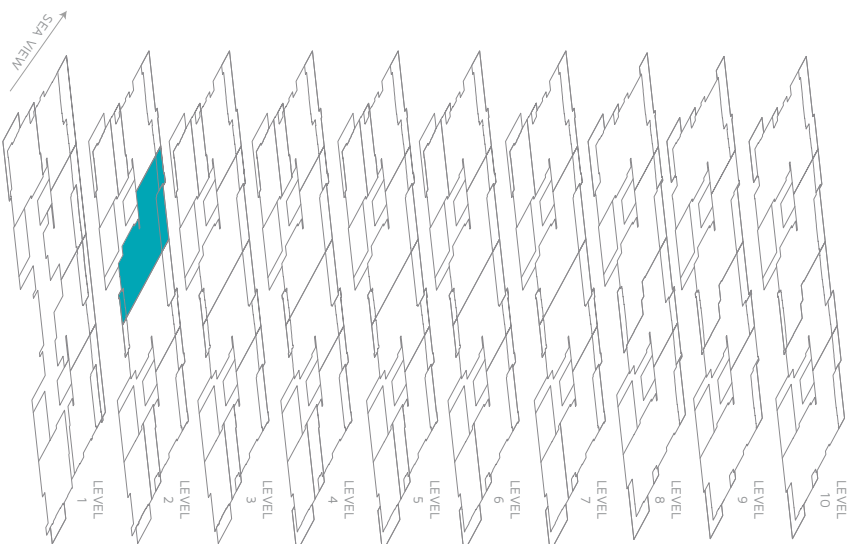
2B-4A Your eligibility for purchase will depend on your state of residency. This is not intended to be an offer to sell nor a solicitation of offers to buy real estate and/or securities to residents of any jurisdiction unless exemptions from registration are available in the applicable jurisdiction.

FLOOR PLAN

 Convertible Balcony (A/C)
 Balcony



S201	LEVEL 2 3 BEDROOM/ 3.5 BATH	Total sq. ft. - 2,948 Unit sq. ft. - 2,371 Terraces sq. ft. - 254 Convertible living sq. ft. - 323	Warm Interior Palette
-------------	--	--	-----------------------------



S201

FEATURES

- Interior design by Guerin Glass Architects
- Direct entry into open kitchen and great room
- Hurricane-rated aluminium doors and windows
- Convertible NanaWall, folding doors for seam-less indoor/outdoor living
- 9' 6" ceiling

UTILITIES

- 100% backup power via dedicated 750 kVA generator
- 27% reduction in energy usage over baseline comparison
- Gas tankless water heater

GREAT ROOM & TERRACE

- Stacking, sliding doors that maximise open space to the terrace
- Lindsey Adelman chandeliers
- Modernist ceiling fans

KITCHEN

- Guerin Glass custom-designed cabinets with soft-close hardware
- 1 ¼"-thick Statuarietto marble, white, honed-finish countertop
- 3/4"-thick Statuarietto marble, white, honed-finish backsplash
- Kohler Purist series faucet
- Stainless steel undermount sink with ¾ HP garbage disposal
- Miele 24" fully integrated dishwasher
- Sub-Zero 36" built-in over-and-under fridge/freezer with icemaker
- Sub-Zero 24" refrigerated/beverage drawers
- Sub-Zero 24" undercounter wine refrigerator (46-bottle capacity)
- Miele 36" 4-burner gas cooktop with stainless steel finish and frame and hood
- Miele 30" PureLine series convection oven
- Miele 30" PureLine series warming drawer
- Miele 24" PureLine series microwave
- Miele 24" plumbed and built-in coffee maker

LAUNDRY

- LG Ultra Large 4.3 cu. ft. frontload washer
- LG Steam 7.4 cu. ft. frontload gas dryer

MASTER SUITE & BATH

- Custom feature wall in suite and bath
- Walk-in closet with custom built-in shelving system
- Waterworks Flyte series plumbing fixtures and accessories
- Kohler Ladena series undermount sink
- Neptune Amaze series free-standing soaking bathtub
- 1 ¼"-thick Statuarietto white marble, honed-finish countertop
- Toto Drake II toilet in separate water closet

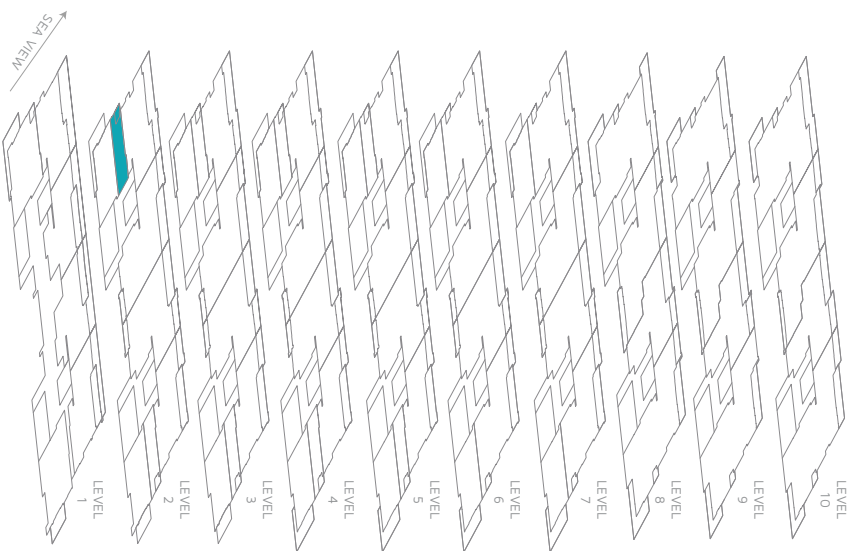
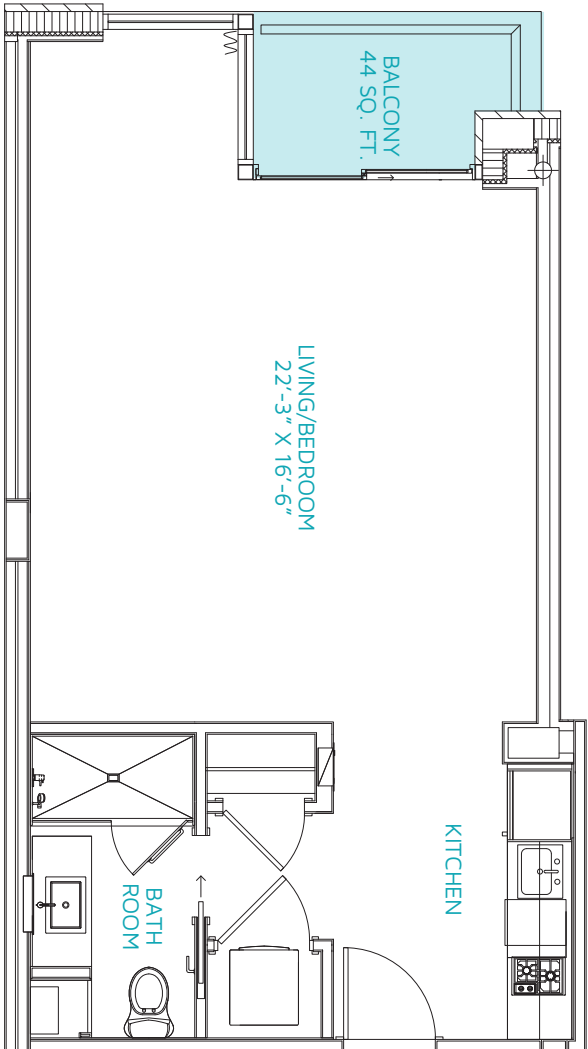
SECONDARY BEDROOMS & BATHS

- Closet with custom built-in shelving system
- 1 ¼"-thick Statuarietto white marble, honed-finish countertop
- Waterworks Flyte series plumbing fixtures and accessories
- Toto Drake II toilet

3B-1 Your eligibility for purchase will depend on your state of residency. This is not intended to be an offer to sell nor a solicitation of offers to buy real estate and/or securities to residents of any jurisdiction unless exemptions from registration are available in the applicable jurisdiction.

FLOOR PLAN

 Balcony



S203

LEVEL 2
 STUDIO

Total sq. ft. - 603
 Unit sq. ft. - 558
 Terrace sq. ft. - 45

White
 Interior
 Palette

S203

FEATURES

- Interior design by Guerin Glass Architects
- Direct entry into open kitchen and living space
- Hurricane-rated aluminium doors and windows
- 9' 6" ceiling

UTILITIES

- 100% backup power via dedicated 750 kVA generator
- 27% reduction in energy usage over baseline comparison
- Gas tankless water heater

Living Room & Terrace

- Modernist ceiling fans

Kitchen

- Guerin Glass custom-designed cabinets with soft-close hardware
- 1 ¼" thick Statuarietto white marble, honed-finish countertop
- ¾" thick Statuarietto white marble, honed-finish backsplash
- Kohler Purist series faucet
- Stainless steel undermount sink with ¾ HP garbage disposal
- Miele 18" fully integrated dishwasher
- Sub-Zero 27" built-in over-and-under fridge/freezer with icemaker
- Wolf 15" 2-burner gas cooktop with stainless steel finish and frame and 24" hood
- Wolf 24" transitional drawer

Laundry



- LG Ultra Large 4.3 cu. ft. frontload washer
- LG Steam 7.4 cu. ft. frontload gas dryer

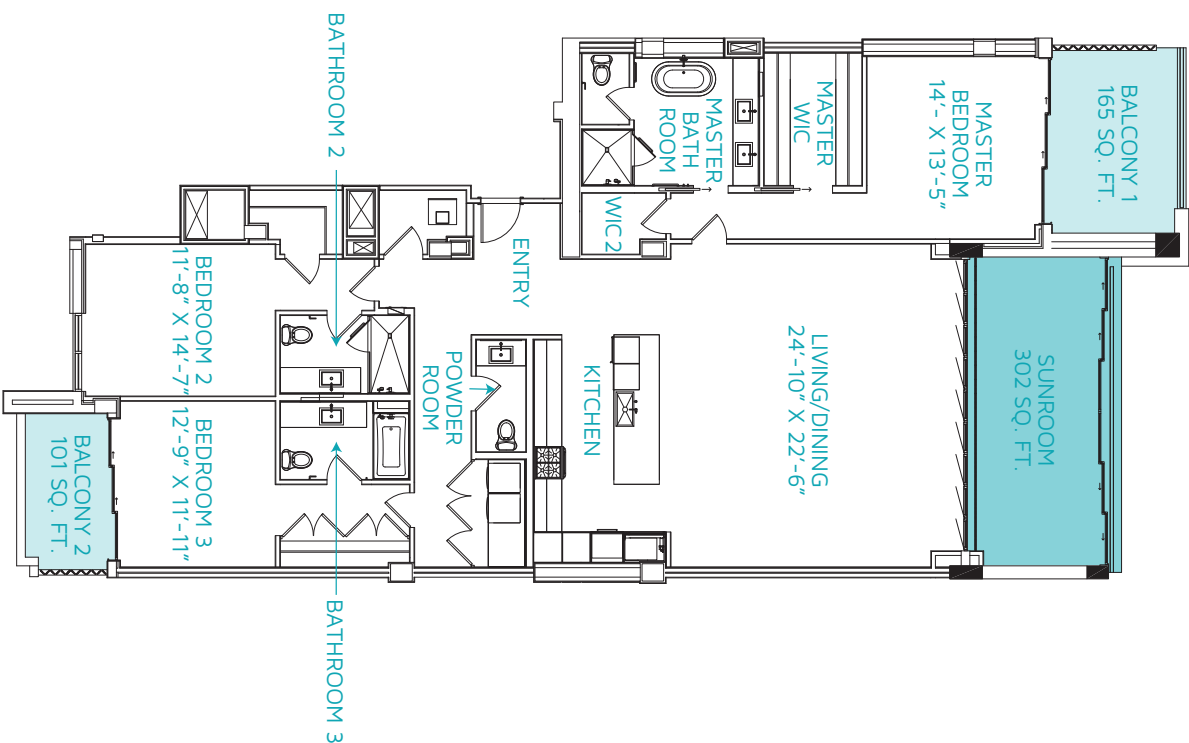
Bath

- Kohler Ladena series undermount sink
- 1 ¼" thick Statuarietto white marble, honed-finish countertop
- Waterworks Flyte series plumbing fixtures and bath accessories

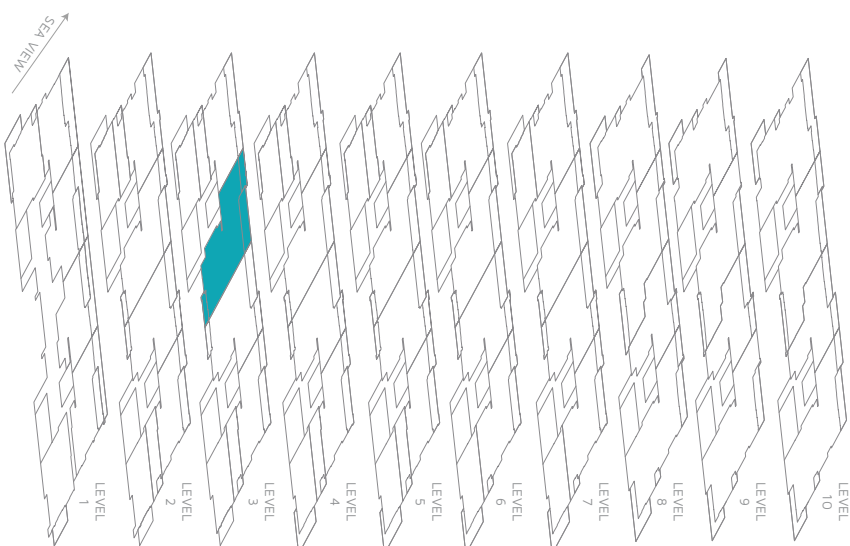
Studio Your eligibility for purchase will depend on your state of residency. This is not intended to be an offer to sell nor a solicitation of offers to buy real estate and/or securities to residents of any jurisdiction unless exemptions from registration are available in the applicable jurisdiction.

FLOOR PLAN

 Convertible Balcony (A/C)
 Balcony



S301	LEVEL 3 3 BEDROOM/ 3.5 BATH	Total sq. ft. - 2,944 Unit sq. ft. - 2,376 Terraces sq. ft. - 266 Convertible living sq. ft. - 302	Warm Interior Palette
-------------	--	--	-----------------------------



S301

FEATURES

- Interior design by Guerin Glass Architects
- Direct entry into open kitchen and great room
- Hurricane-rated aluminium doors and windows
- Convertible NanaWall, folding doors for seamless indoor/outdoor living
- 9' 6" ceiling

UTILITIES

- 100% backup power via dedicated 750 kVA generator
- 27% reduction in energy usage over baseline comparison
- Gas tankless water heater

GREAT ROOM & TERRACE

- Stacking, sliding doors that maximise open space to the terrace
- Lindsey Adelman chandeliers
- Modernist ceiling fans

KITCHEN

- Guerin Glass custom-designed cabinets with soft-close hardware
- 1 ¼"-thick Statuarietto white marble, honed-finish countertop
- ¾"-thick Statuarietto whitemarble, honed-finish backsplash
- Kohler Purist series faucet
- Stainless steel undermount sink with ¾ HP garbage disposal
- Miele 24" fully integrated dishwasher
- Sub-Zero 36" built-in over-and-under fridge/freezer with icemaker
- Sub-Zero 24" refrigerated/beverage drawers
- Sub-Zero 24" undercounter wine refrigerator (46-bottle capacity)
- Miele 30" 4-burner gas cooktop with stainless steel finish and frame and hood
- Miele 30" PureLine series convection oven
- Miele 30" PureLine series warming drawer
- Miele 24" PureLine series microwave
- Miele 24" plumbed and built-in coffee maker

LAUNDRY

- LG Ultra Large 4.3 cu. ft. frontload washer
- LG Steam 7.4 cu. ft. frontload gas dryer

MASTER SUITE & BATH

- Custom feature wall in suite and bath
- Walk-in closet with custom built-in shelving system
- Waterworks Flyte series plumbing fixtures and accessories
- Kohler Ladena series undermount sink
- Neptune Amaze series free-standing soaking bathtub
- 1 ¼"-thick Statuarietto white marble, honed-finish countertop
- Toto Drake II toilet in separate water closet

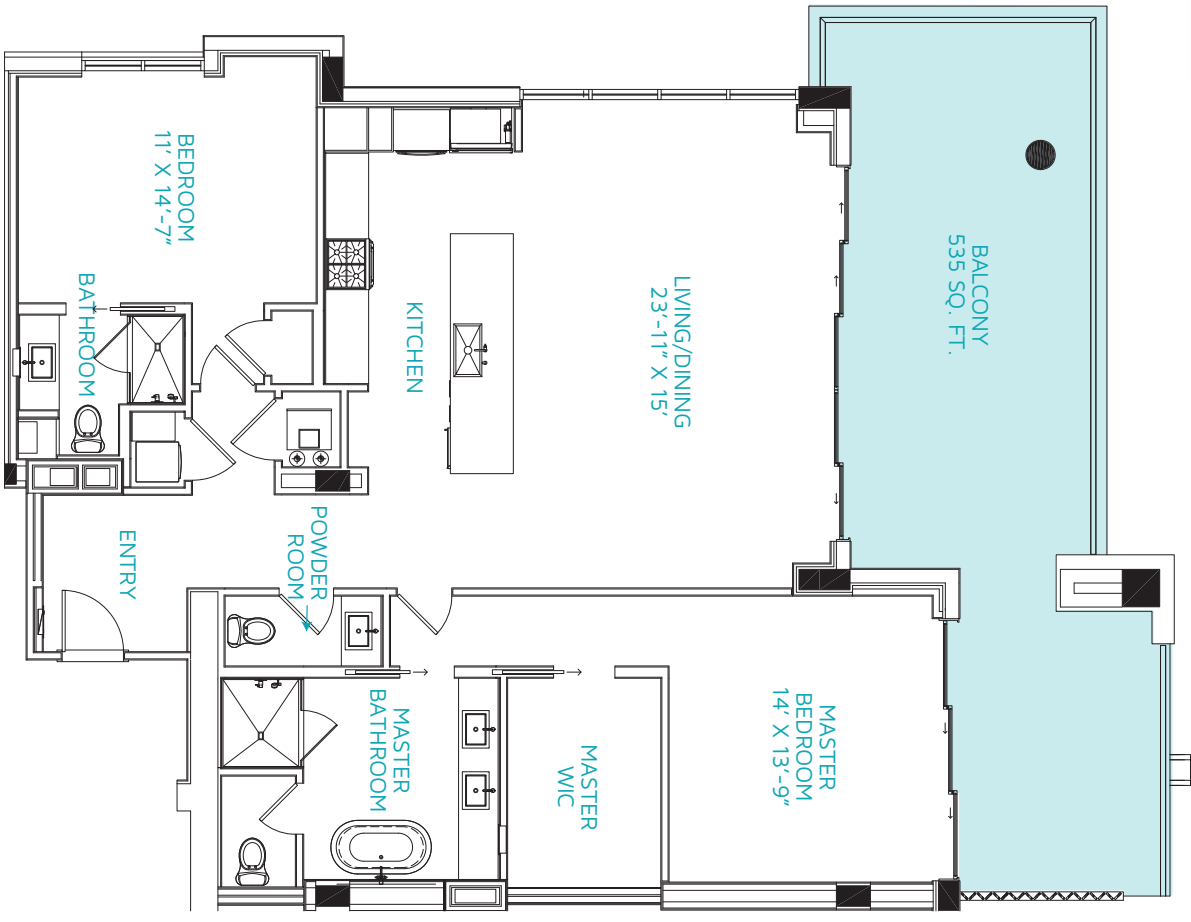
SECONDARY BEDROOMS & BATHS

- 1 ¼"-thick Statuarietto white marble, honed-finish countertop
- Waterworks Flyte series plumbing fixtures and accessories
- Toto Drake II toilet
- Closet with custom built-in shelving system

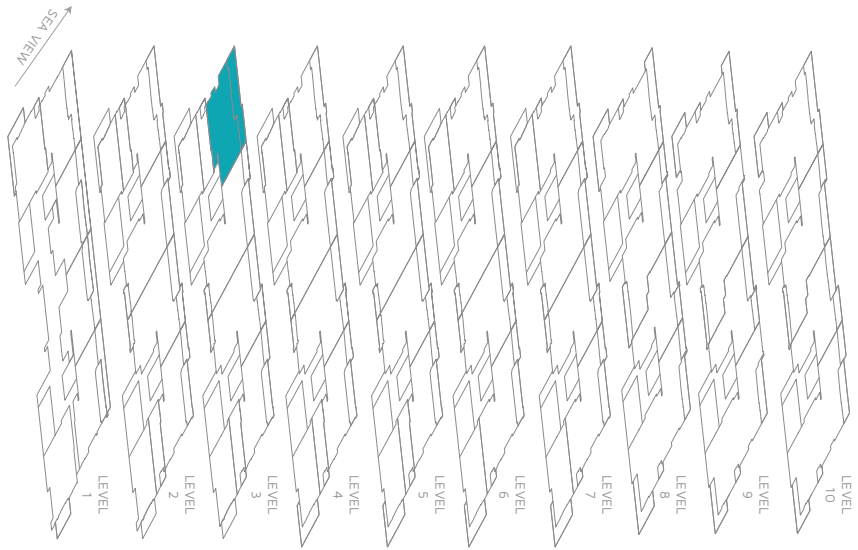
3B-1 Your eligibility for purchase will depend on your state of residency. This is not intended to be an offer to sell nor a solicitation of offers to buy real estate and/or securities to residents of any jurisdiction unless exemptions from registration are available in the applicable jurisdiction.

FLOOR PLAN

 Balcony



S302	LEVEL 3 2 BEDROOM/ 2.5 BATH	Total sq. ft. - 2,140 Unit sq. ft. - 1,605 Terraces sq. ft. - 535	Warm Interior Palette
-------------	-----------------------------------	--	-----------------------------



S302

FEATURES

- Interior design by Guerin Glass Architects
- Direct entry into open kitchen and great room with framed water views
- Hurricane rated aluminium doors and windows
- 9' 6" ceiling

UTILITIES

- 100% backup power via dedicated 750 kVA generator
- 27% reduction in energy usage over baseline comparison
- Gas tankless water heater

GREAT ROOM & TERRACE

- Stacking, sliding doors that maximise open space to the terrace
- Lindsey Adelman chandeliers
- Modernist ceiling fans

KITCHEN

- Guerin Glass custom-designed cabinets with soft-close hardware
- 1 ¼" thick Statuarietto marble, white, honed finish countertop
- 3/4" thick Statuarietto marble, white, honed finish backsplash
- Kohler Purist series faucet
- Stainless steel undermount sink with ¾ HP garbage disposal
- Miele 24" fully integrated dishwasher
- Sub-Zero 36" built-in over-and-under fridge/freezer with ice maker
- Sub-Zero 24" undercounter wine refrigerator (46 bottle capacity)
- Miele 30" 4-burner gas cooktop with stainless steel finish and frame and hood
- Miele 30" PureLine series convection oven
- Miele 30" PureLine series warming drawer
- Miele 24" PureLine series microwave

LAUNDRY

- LG Ultra Large 4.3 cu. ft. frontload washer
- LG Steam 7.4 cu. ft. frontload gas dryer

MASTER SUITE & BATH

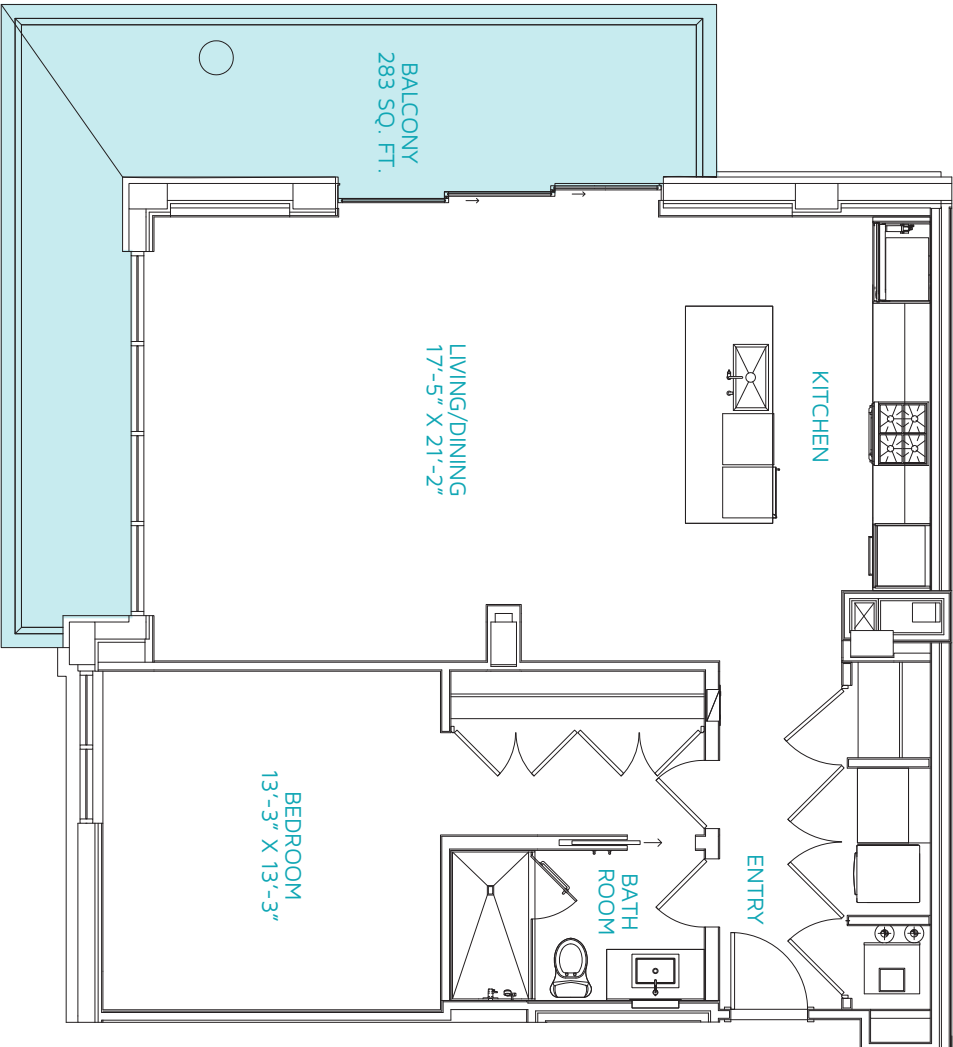
- Custom feature wall in suite and bath
- Walk-in closet with custom built-in shelving system
- Waterworks Flyte series plumbing fixtures and accessories
- Kohler Ladena series undermount sink
- Neptune Amaze series free-standing soaking bathtub
- 1 ¼"-thick Statuarietto white marble, honed finish countertop
- Toto Drake II toilet in separate water closet

SECONDARY BEDROOMS & BATHS

- 1 ¼"-thick Statuarietto white marble, honed finish countertop
- Waterworks Flyte series plumbing fixtures and accessories
- Toto Drake II toilet
- Closet with custom built-in shelving system

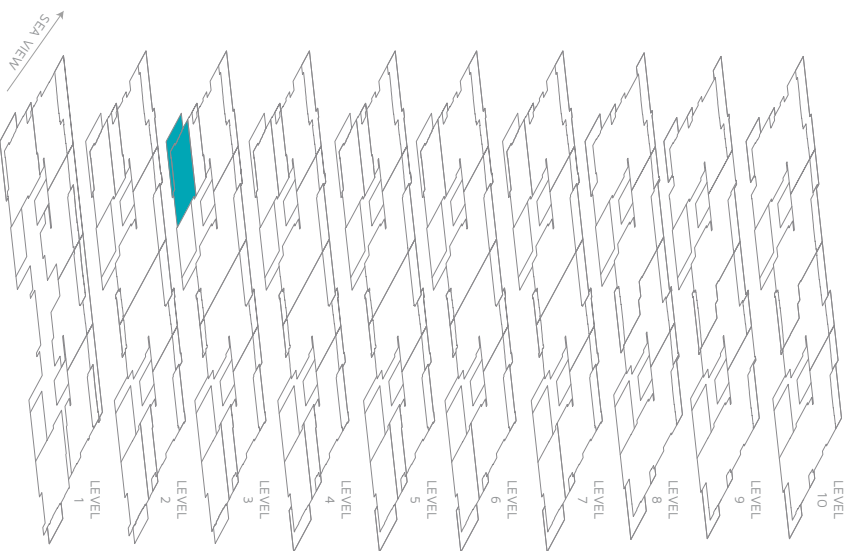
2B-1 Your eligibility for purchase will depend upon your state of residency. This is not intended to be an offer to sell nor a solicitation of offers to buy real estate and/ or securities to residents of any jurisdiction unless exemptions from registration are available in the applicable jurisdiction.

FLOOR PLAN



Balcony

S304	LEVEL 3 1 BEDROOM/ 1 BATH	Total sq. ft. - 1,374 Unit sq. ft. - 1,091 Terrace sq. ft. - 283	Warm Interior Palette
-------------	---------------------------------	---	-----------------------------



S304

FEATURES

- Interior design by Guerin Glass Architects
- Direct entry into open kitchen and great room with framed water views
- Hurricane rated aluminium doors and windows
- 9' 6" ceiling height

UTILITIES

- 100% backup power via dedicated 750 kVA generator
- 27% reduction in energy usage over baseline comparison
- Gas tankless water heater

GREAT ROOM & TERRACE

- Stacking, sliding doors that maximise open space to the terrace
- Lindsey Adelman chandeliers
- Modernist ceiling fans

KITCHEN

- Guerin Glass custom-designed cabinets with soft-close hardware
- 1 ¼"-thick Statuarietto marble, white, honed finish countertop
- 3/4"-thick Statuarietto marble, white, honed finish backsplash
- Kohler Purist series faucet
- Stainless steel undermount sink with ¾ HP garbage disposal
- Miele 24" fully integrated dishwasher
- Sub-Zero 36" built-in over-and-under fridge/freezer with ice maker
- Sub-Zero 24" refrigerated/beverage drawers
- Sub-Zero 24" undercounter wine refrigerator (46 bottle capacity)
- Miele 36" 4-burner gas cooktop with stainless steel finish and frame and hood
- Miele 30" PureLine series convection oven
- Miele 24" PureLine series microwave

LAUNDRY



- LG Ultra Large 4.3 cu. ft. frontload washer
- LG Steam 7.4 cu. ft. frontload gas dryer

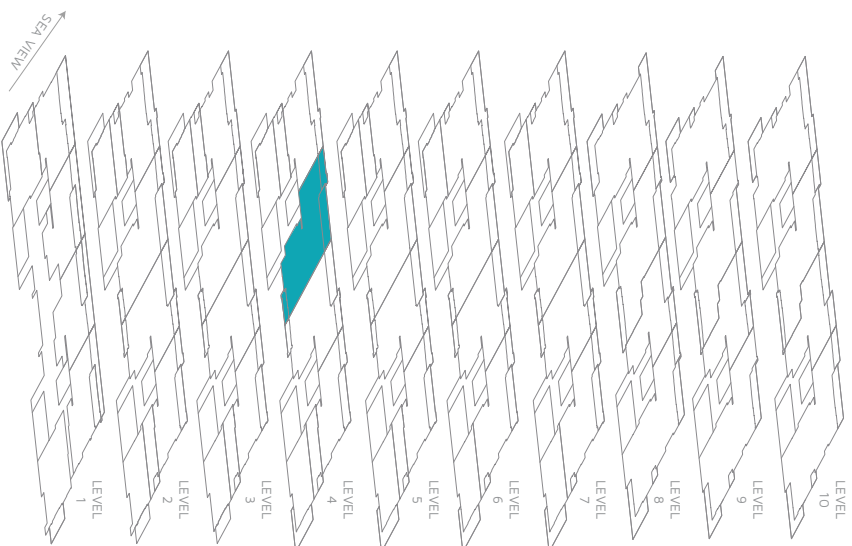
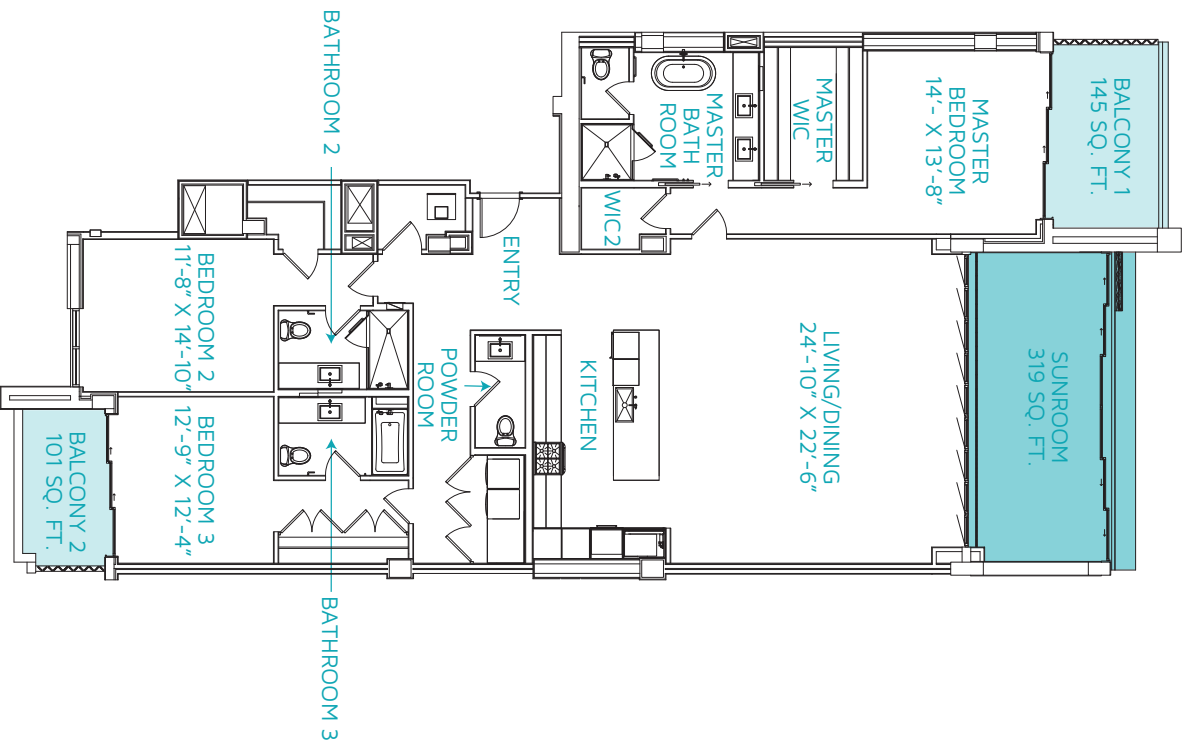
MASTER SUITE & BATH

- Reach-in closet with custom built-in shelving system
- Waterworks Flyte series plumbing fixtures and accessories
- Kohler Ladena series undermount sink
- 1 ¼"-thick Statuarietto marble, white, honed finish countertop

^{1-B} Your eligibility for purchase will depend upon your state of residency. This is not intended to be an offer to sell nor a solicitation of offers to buy real estate and/ or securities to residents of any jurisdiction unless exemptions from registration are available in the applicable jurisdiction.

FLOOR PLAN

 Convertible Balcony (A/C)
 Balcony



S401	LEVEL 4 3 BEDROOM/ 3.5 BATH	Total sq. ft. - 2,936 Unit sq. ft. - 246 Terraces sq. ft. - 2,371 Convertible living sq. ft. - 319	Warm Interior Palette
-------------	-----------------------------------	--	-----------------------------

S401

FEATURES

- Interior design by Guerin Glass Architects
- Direct entry into open kitchen and great room with framed water views
- Hurricane-rated aluminum doors and windows
- Convertible NanaWall, folding doors for seamless indoor/outdoor living
- 9' 6" ceiling

UTILITIES

- 100% backup power via dedicated 750 kVA generator
- 27% reduction in energy usage over baseline comparison
- Gas tankless water heater

GREAT ROOM & TERRACE

- Stacking, sliding doors that maximise open space to the terrace
- Lindsey Adelman chandeliers
- Modernist ceiling fans

KITCHEN

- Guerin Glass custom-designed cabinets with soft-close hardware
- 1 ¼"-thick Statuarietto white marble, honed-finish countertop
- 3/4"-thick Statuarietto white marble, honed-finish backsplash
- Kohler Purist series faucet
- Sub-Zero 36" built-in over-and-under fridge/freezer with icemaker
- Sub-Zero 24" refrigerated/beverage drawers
- Sub-Zero 24" undercounter wine refrigerator (46-bottle capacity)
- Miele 30" 4-burner gas cooktop with stainless steel finish and frame and hood
- Miele 30" PureLine series convection oven
- Miele 30" PureLine series warming drawer
- Miele 24" PureLine series microwave
- Miele 24" fully integrated dishwasher
- Stainless steel undermount sink with ¾ HP garbage disposal
- Miele 24" plumbed and built-in coffee maker

LAUNDRY

- LG Ultra Large 4.3 cu. ft. frontload washer
- LG Steam 7.4 cu. ft. frontload gas dryer

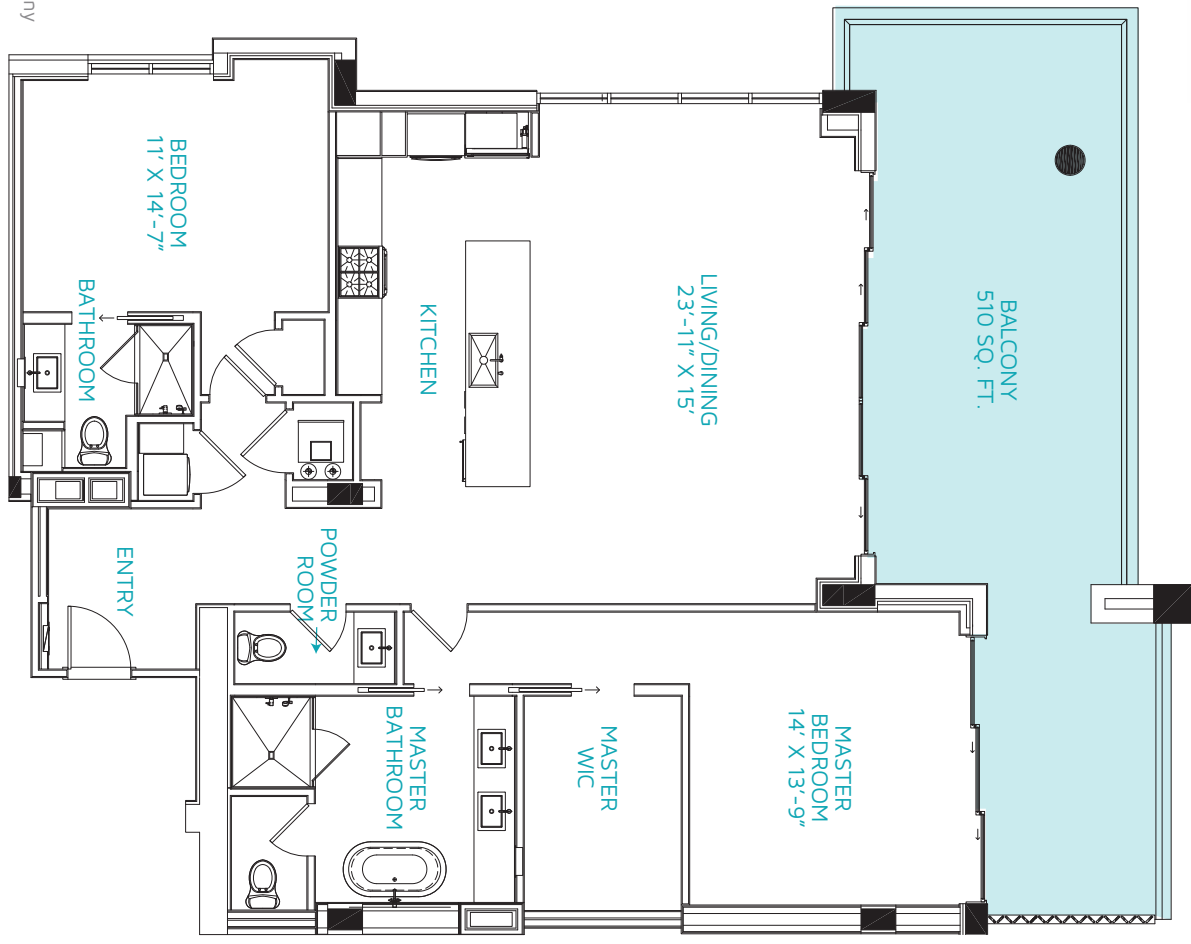
MASTER SUITE & BATH

- Custom feature wall in suite and bath
- Walk-in closet with custom built-in shelving
- Waterworks Flyte series plumbing fixtures and accessories
- Kohler Ladena series undermount sink
- Neptune Amaze series free-standing soaking bathtub
- 1 ¼"-thick Statuarietto white marble, honed-finish countertop
- Toto Drake II toilet in separate water closet

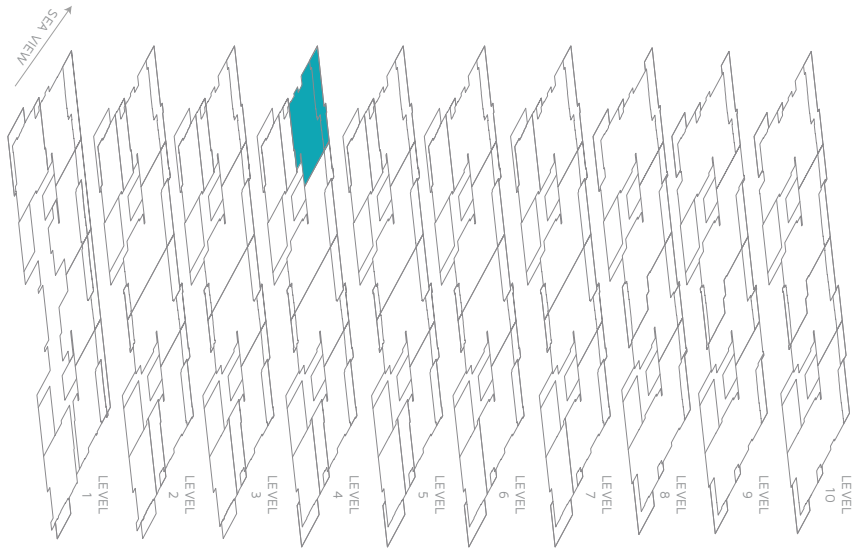
3B-1 Your eligibility for purchase will depend on your state of residency. This is not intended to be an offer to sell nor a solicitation of offers to buy real estate and/or securities to residents of any jurisdiction unless exemptions from registration are available in the applicable jurisdiction.

FLOOR PLAN

 Balcony



S402	LEVEL 4 2 BEDROOM/ 2.5 BATH	Total sq. ft. - 2,110 Unit sq. ft. - 1,600 Terraces sq. ft. - 510	Warm Interior Palette
-------------	-----------------------------------	--	-----------------------------



S402

FEATURES

- Interior design by Guerin Glass Architects
- Direct entry into open kitchen and great room
- Hurricane-rated aluminium doors and windows
- 9' 6" ceiling

UTILITIES

- 100% backup power via dedicated 750 kVA generator
- 27% reduction in energy usage over baseline comparison
- Gas tankless water heater

GREAT ROOM & TERRACE

- Stacking, sliding doors that maximise open space to the terrace
- Lindsey Adelman chandeliers
- Modernist ceiling fans

KITCHEN

- Guerin Glass custom-designed cabinets with soft-close hardware
- 1 ¼"-thick Statuarietto white marble, honed-finish countertop
- ¾"-thick Statuarietto white marble, honed-finish backsplash
- Kohler Purist series faucet
- Sub-Zero 36" built-in over-and-under fridge/freezer with icemaker
- Sub-Zero 24" undercounter wine refrigerator (46-bottle capacity)
- Miele 24" fully integrated dishwasher
- Miele 30" 4-burner gas cooktop with stainless steel finish and frame and hood
- Miele 30" PureLine series convection oven
- Miele 30" PureLine series warming drawer
- Miele 24" PureLine series microwave
- Stainless steel undermount sink with ¾ HP garbage disposal

LAUNDRY

- LG Ultra Large 4.3 cu. ft. frontload washer
- LG Steam 7.4 cu. ft. frontload gas dryer

MASTER SUITE & BATH

- Custom feature wall in suite and bath
- Walk-in-closet with custom built-in shelving
- Waterworks Flyte series plumbing fixtures and accessories
- Kohler Ladena series undermount sink
- Neptune Amaze series free-standing soaking bathtub
- 1 ¼"-thick Statuarietto white marble, honed-finish countertop
- Toto Drake II toilet in separate water closet

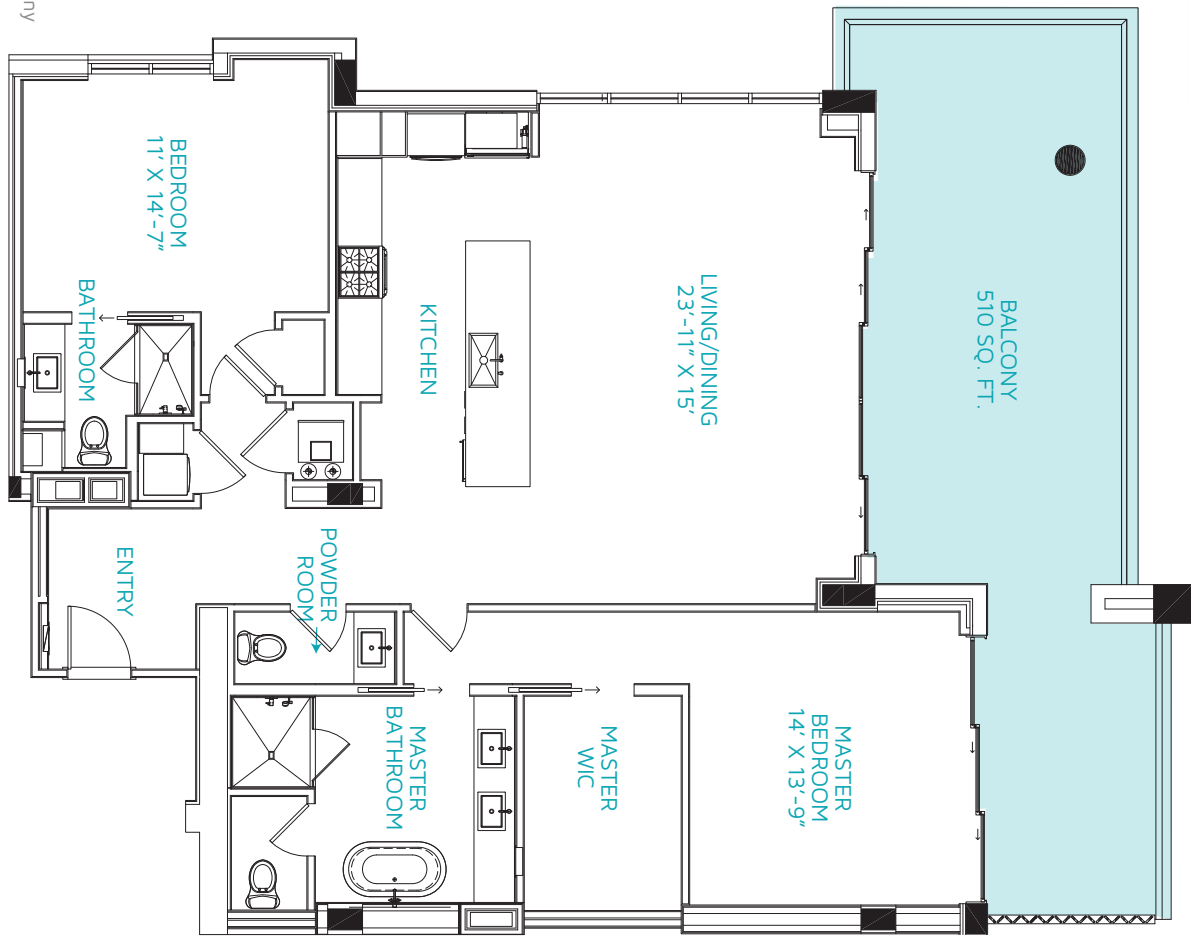
SECONDARY BEDROOMS & BATHS

- Powder room
- Waterworks Flyte series plumbing fixtures and accessories
- Reach-in closet with rod and upper shelves

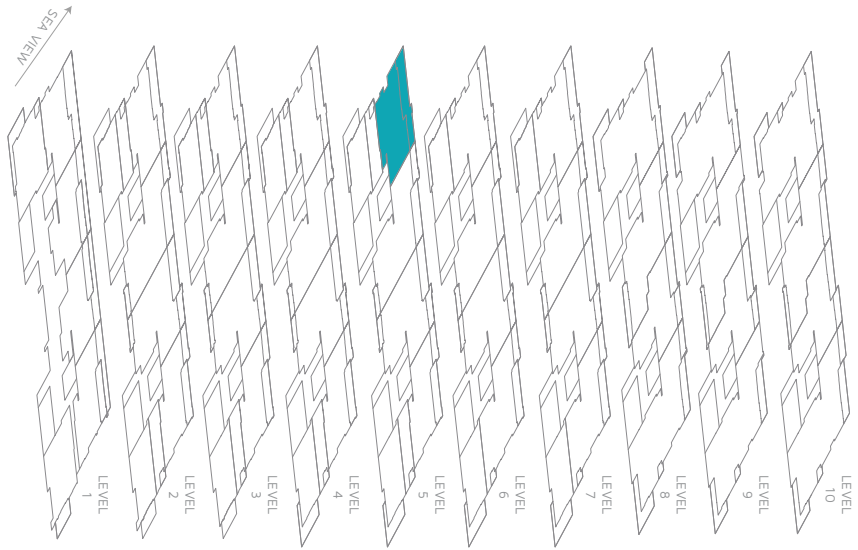
2B-1 Your eligibility for purchase will depend on your state of residency. This is not intended to be an offer to sell nor a solicitation of offers to buy real estate and/or securities to residents of any jurisdiction unless exemptions from registration are available in the applicable jurisdiction.

FLOOR PLAN

 Balcony



S502	LEVEL 5 2 BEDROOM/ 2.5 BATH	Total sq. ft. - 2,110 Unit sq. ft. - 1,600 Terrace sq. ft. - 510	Warm Interior Palette
-------------	-----------------------------------	---	-----------------------------



S502

FEATURES

- Interior design by Guerin Glass Architects
- Direct entry into open kitchen and great room
- Hurricane-rated aluminium doors and windows
- 9' 6" ceiling

UTILITIES

- 100% backup power via dedicated 750 kVA generator
- 27% reduction in energy usage over baseline comparison
- Gas tankless water heater

GREAT ROOM & TERRACE

- Stacking, sliding doors that maximise open space to the terrace
- Lindsey Adelman chandeliers
- Modernist ceiling fans

KITCHEN

- Guerin Glass custom-designed cabinets with soft-close hardware
- 1 ¼"-thick Statuarietto white marble, honed-finish countertop
- ¾"-thick Statuarietto white marble, honed-finish backsplash
- Kohler Purist series faucet
- Stainless steel undermount sink with ¾ HP garbage disposal
- Miele 24" fully integrated dishwasher
- Sub-Zero 36" built-in over-and-under fridge/freezer with icemaker
- Sub-Zero 24" undercounter wine refrigerator (46-bottle capacity)
- Miele 30" 4-burner gas cooktop with stainless steel finish and frame and hood
- Miele 30" PureLine series convection oven
- Miele 30" PureLine series warming drawer
- Miele 24" PureLine series microwave

LAUNDRY

- LG Ultra Large 4.3 cu. ft. frontload washer
- LG Steam 7.4 cu. ft. frontload gas dryer

MASTER SUITE & BATH

- Custom feature wall in suite and bath
- Walk-in closet with custom built-in shelving system
- Waterworks Flyte series plumbing fixtures and accessories
- Kohler Ladena series undermount sink
- Neptune Amaze series free-standing soaking bathtub
- 1 ¼"-thick Statuarietto white marble, honed-finish countertop
- Toto Drake II toilet in separate water closet

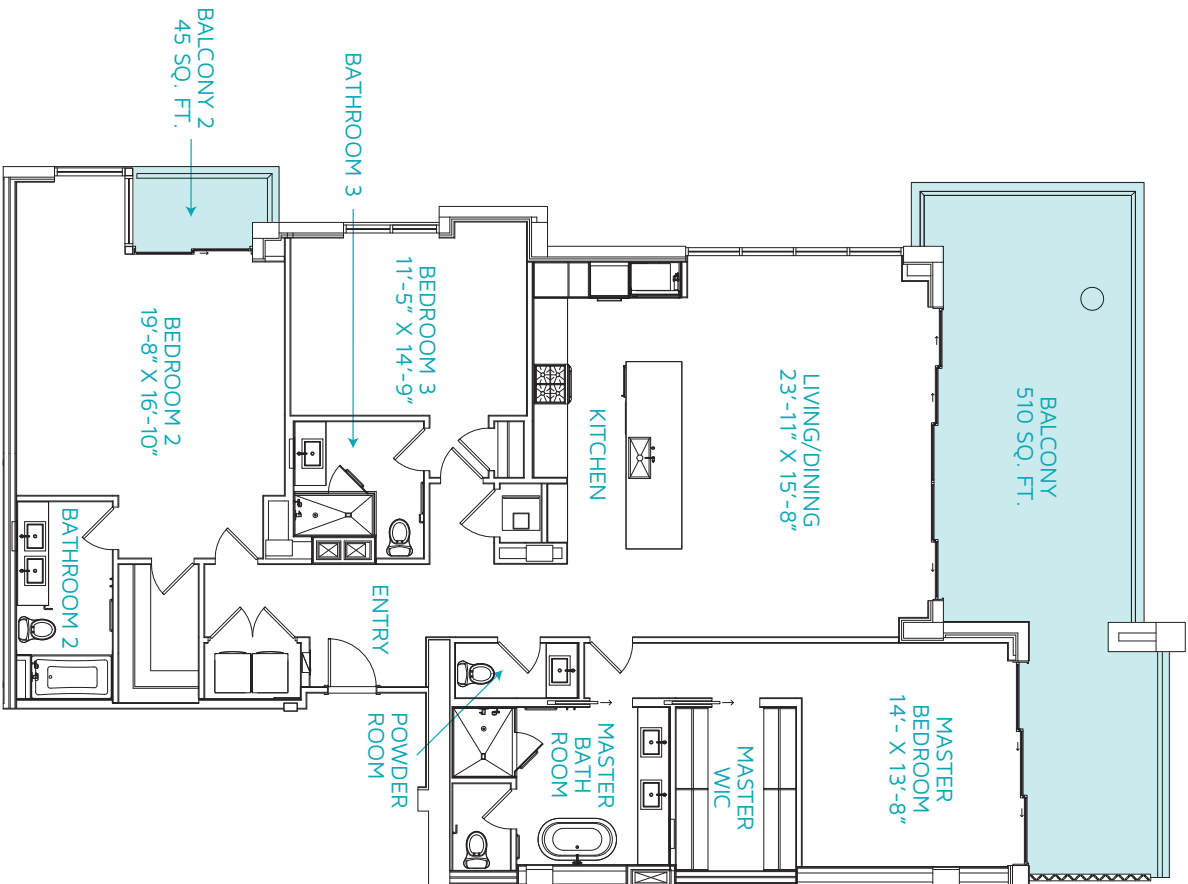
SECONDARY BEDROOMS & BATHS

- 1 ¼"-thick Statuarietto white marble, honed-finish countertop
- Waterworks Flyte series plumbing fixtures and accessories
- Toto Drake II toilet
- Closet with custom built-in shelving system

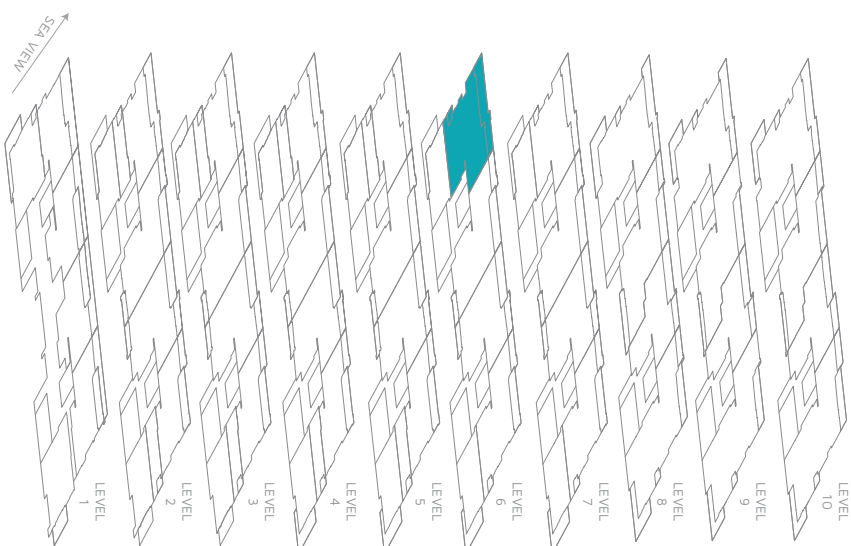
2B-1 Your eligibility for purchase will depend on your state of residency. This is not intended to be an offer to sell nor a solicitation of offers to buy real estate and/or securities to residents of any jurisdiction unless exemptions from registration are available in the applicable jurisdiction.

FLOOR PLAN

 Balcony



S602	LEVEL 6 3 BEDROOM/ 3.5 BATH	Total sq. ft. - 2,712 Unit sq. ft. - 2,157 Terraces sq. ft. - 555	Warm Interior Palette
-------------	-----------------------------------	--	-----------------------------



S602

FEATURES

- Interior design by Guerin Glass Architects
- Direct entry into open kitchen and great room with framed water views
- Hurricane-rated aluminium doors and windows
- 9' 6" ceiling

UTILITIES

- 100% backup power via dedicated 750 kVA generator
- 27% reduction in energy usage over baseline comparison
- Gas tankless water heater

GREAT ROOM & TERRACE

- Stacking, sliding doors that maximise open space to the terrace
- Lindsey Adelman chandeliers
- Modernist ceiling fans

KITCHEN

- Guerin Glass custom-designed cabinets with soft-close hardware
- 1 ¼"-thick Statuarietto white marble, honed-finish countertop
- ¾"-thick Statuarietto white marble, honed-finish backsplash
- Kohler Purist series faucet
- Stainless steel undermount sink with ¾ HP garbage disposal
- Miele 24" fully integrated dishwasher
- Sub-Zero 36" built-in over-and-under fridge/freezer with icemaker
- Sub-Zero 24" refrigerated/beverage drawers
- Sub-Zero 24" undercounter wine refrigerator (46-bottle capacity)
- Miele 30" 4-burner gas cooktop with stainless steel finish and frame and hood
- Miele 30" PureLine series convection oven
- Miele 30" PureLine series warming drawer
- Miele 24" PureLine series microwave
- Miele 24" plumbed and built-in coffee maker

LAUNDRY

- LG Ultra Large 4.3 cu. ft. frontload washer
- LG Steam 7.4 cu. ft. frontload gas dryer

MASTER SUITE & BATH

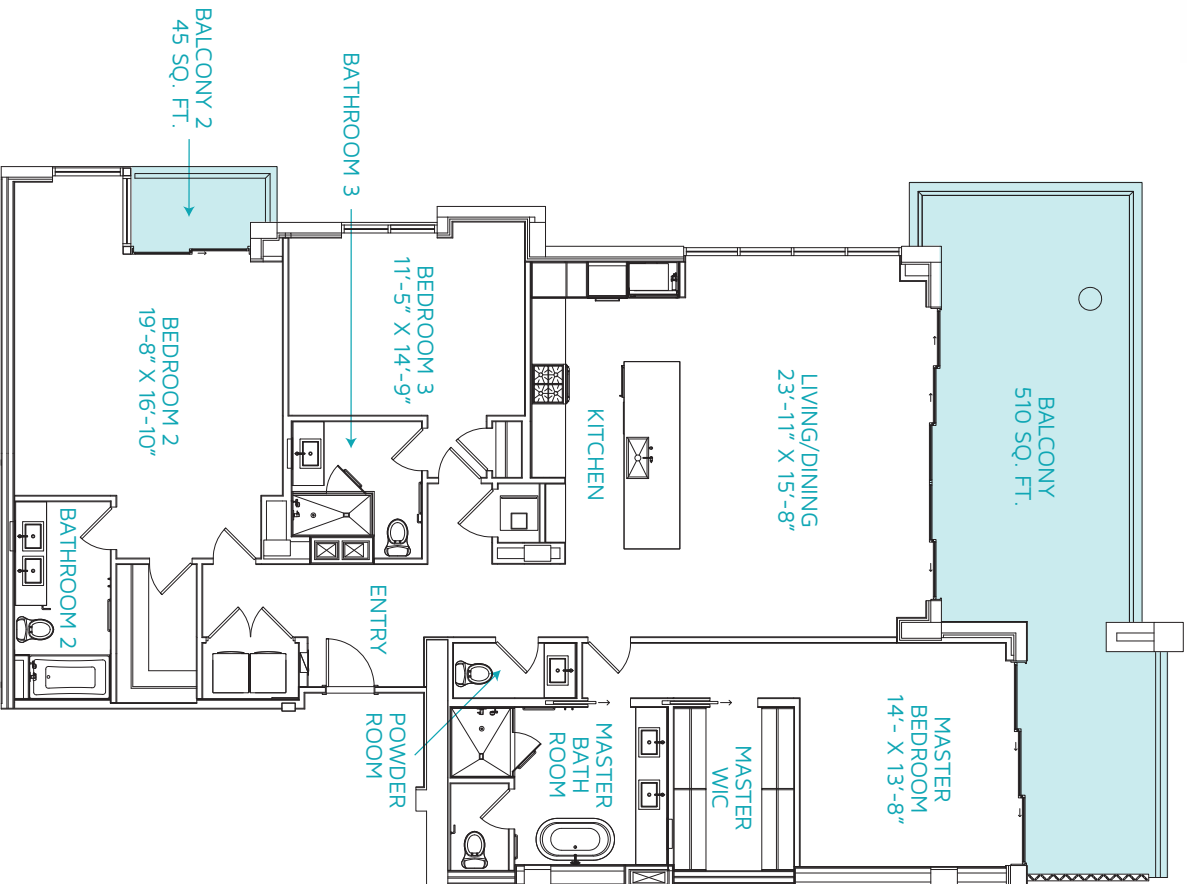
- Custom feature wall in suite and bath
- Walk-in closet with custom built-in shelving system
- Neptune Amaze series free-standing soaking bathtub
- Waterworks Flyte series plumbing fixtures and accessories
- Kohler Ladena series undermount sink
- 1 ¼"-thick Statuarietto white marble, honed-finish countertop
- Toto Drake II toilet in separate water closet

SECONDARY BEDROOMS & BATHS

- 1 ¼"-thick Statuarietto white marble, honed-finish countertop
- Waterworks Flyte series plumbing fixtures and accessories
- Toto Drake II toilet
- Closet with custom built-in shelving system

3B-2 Your eligibility for purchase will depend on your state of residency. This is not intended to be an offer to sell nor a solicitation of offers to buy real estate and/or securities to residents of any jurisdiction unless exemptions from registration are available in the applicable jurisdiction.

FLOOR PLAN



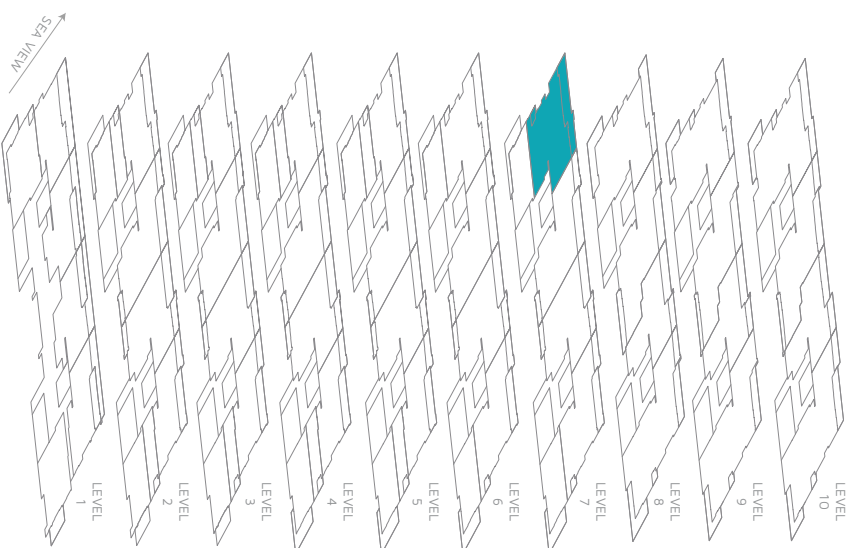
Balcony

S702

LEVEL 7
**3 BEDROOM/
 3.5 BATH**

Total sq. ft. - 2,712
 Unit sq. ft. - 2,157
 Terraces sq. ft. - 555

Warm
 Interior
 Palette



S702

FEATURES

- Interior design by Guerin Glass Architects
- Direct entry into open kitchen and great room
- Hurricane-rated aluminium doors and windows
- 9' 6" ceiling

UTILITIES

- 100% backup power via dedicated 750 kVA generator
- 27% reduction in energy usage over baseline comparison
- Gas tankless water heater

GREAT ROOM & TERRACE

- Stacking, sliding doors that maximise open space to the terrace
- Lindsey Adelman chandeliers
- Modernist ceiling fans

KITCHEN

- Guerin Glass custom-designed cabinets with soft-close hardware
- 1 ¼"-thick Statuarietto white marble, honed-finish countertop
- ¾"-thick Statuarietto white marble, honed-finish backsplash
- Kohler Purist series faucet
- Stainless steel undermount sink with ¾ HP garbage disposal
- Miele 24" fully integrated dishwasher
- Sub-Zero 36" built-in over-and-under fridge/freezer with icemaker
- Sub-Zero 24" refrigerated/beverage drawers
- Miele 30" 4-burner gas cooktop with stainless steel finish and frame and hood
- Miele 30" PureLine series convection oven
- Miele 30" PureLine series warming drawer
- Miele 24" PureLine series microwave
- Miele 24" plumbed and built-in coffee maker

LAUNDRY

- LG Ultra Large 4.3 cu. ft. frontload washer
- LG Steam 7.4 cu. ft. frontload gas dryer

MASTER SUITE & BATH

- Custom feature wall in suite and bath
- Walk-in closet with custom built-in shelving system
- Waterworks Flyte series plumbing fixtures and accessories
- Kohler Ladena series undermount sink
- Neptune Amaze series free-standing soaking bathtub
- 1 ¼"-thick Statuarietto white marble, honed-finish countertop
- Toto Drake II toilet in separate water closet

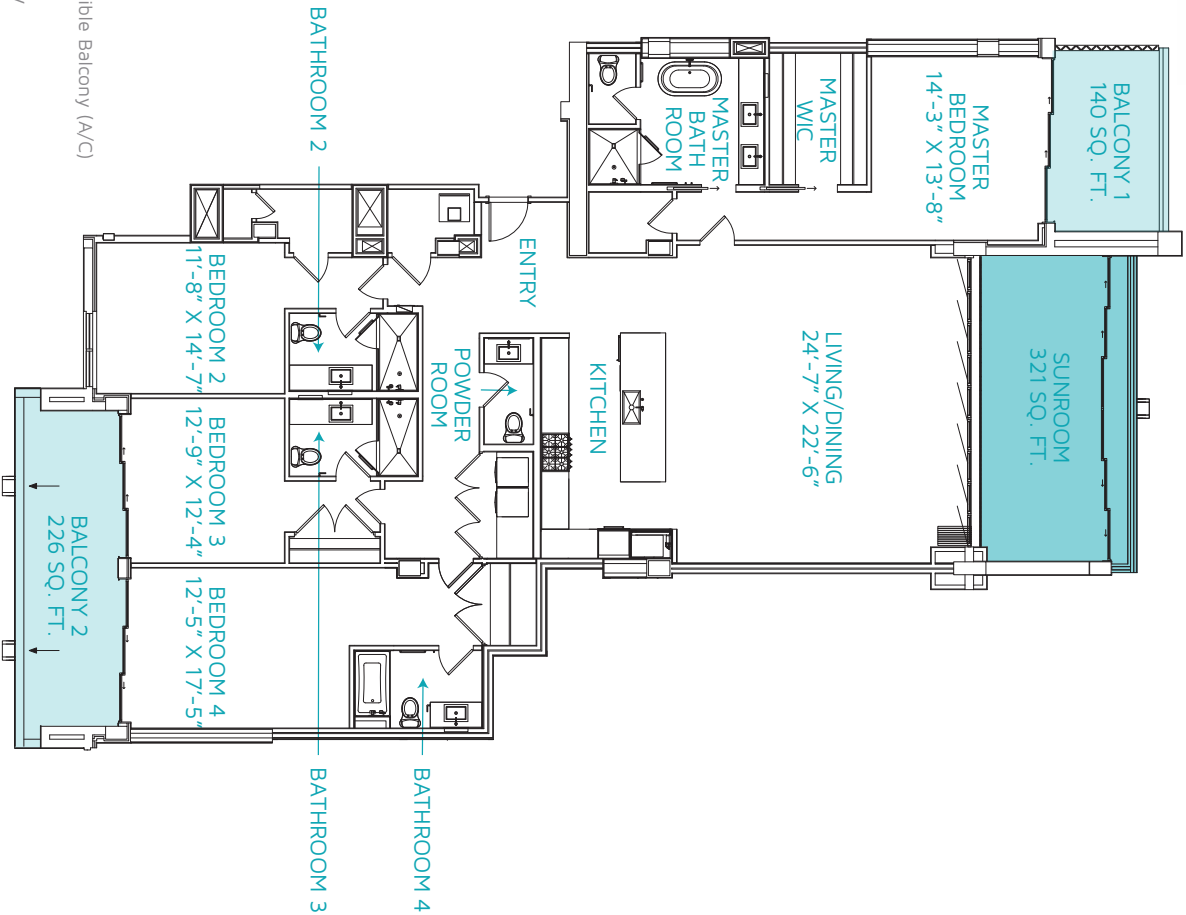
SECONDARY BEDROOMS & BATHS

- 1 ¼"-thick Statuarietto white marble, honed-finish countertop
- Waterworks Flyte series plumbing fixtures and accessories
- Toto Drake II toilet
- Closet with custom built-in shelving system

3B-2 Your eligibility for purchase will depend on your state of residency. This is not intended to be an offer to sell nor a solicitation of offers to buy real estate and/or securities to residents of any jurisdiction unless exemptions from registration are available in the applicable jurisdiction.

FLOOR PLAN

Convertible Balcony (A/C)
 Balcony

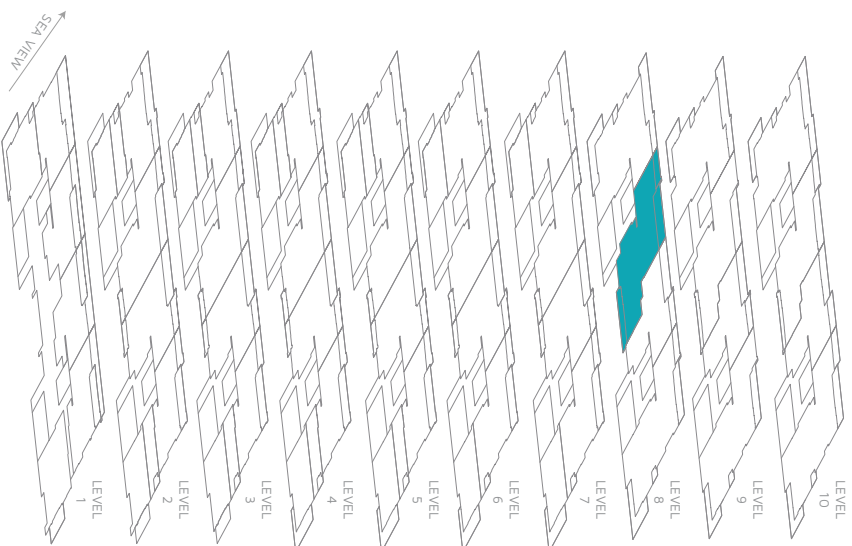


S801

LEVEL 8
 4 BEDROOM/
 4.5 BATH

Total sq. ft. - 3,451
 Unit sq. ft. - 2,764
 Terraces sq. ft. - 366
 Convertible living sq. ft. - 321

Warm
 Interior
 Palette



S801

FEATURES

- Interior design by Guerin Glass Architects
- Direct entry into open kitchen and great room
- Hurricane-rated aluminium doors and windows
- Convertible NanaWall, folding doors for seamless indoor/outdoor living
- 10' 10" ceiling

UTILITIES

- 100% backup power via dedicated 750 kVA generator
- 27% reduction in energy usage over baseline comparison
- Gas tankless water heater

GREAT ROOM & TERRACES

- Stacking, sliding doors that maximise open space to the terrace
- Lindsey Adelman chandeliers
- Modernist ceiling fans

KITCHEN

- Guerin Glass custom-designed cabinets with soft-close hardware
- 1 ¼"-thick Statuarietto white marble, honed-finish countertop
- ¾"-thick Statuarietto white marble, honed-finish backsplash
- Kohler Purist series faucet
- Stainless steel undermount sink with ¾ HP garbage disposal
- Miele 24" fully integrated dishwasher
- Sub-Zero 36" built-in over-and-under fridge/freezer with icemaker
- Sub-Zero 24" undercounter wine refrigerator (46-bottle capacity)
- Sub-Zero 24" refrigerated/beverage drawers
- Miele 30" 5-burner gas cooktop with stainless steel finish and frame and hood
- Miele 30" stainless steel, built-in wall cabinet hood
- Miele 30" PureLine series convection oven
- Miele 30" PureLine series warming drawer
- Miele 24" PureLine series microwave
- Miele 24" plumbed and built-in coffee maker

LAUNDRY

- LG Ultra Large 4.3 cu. ft. frontload washer
- LG Steam Dryer 7.4 cu. ft. frontload gas dryer

MASTER SUITE & BATH

- Custom feature wall in suite and bath
- Walk-in closet with custom built-in shelving system
- Waterworks Flyte series plumbing fixtures and accessories
- Kohler Ladena series undermount sink
- Neptune Amaze series free-standing soaking bathtub
- 1 ¼"-thick Statuarietto white marble, honed-finish countertop
- Toto Drake II toilet in separate water closet

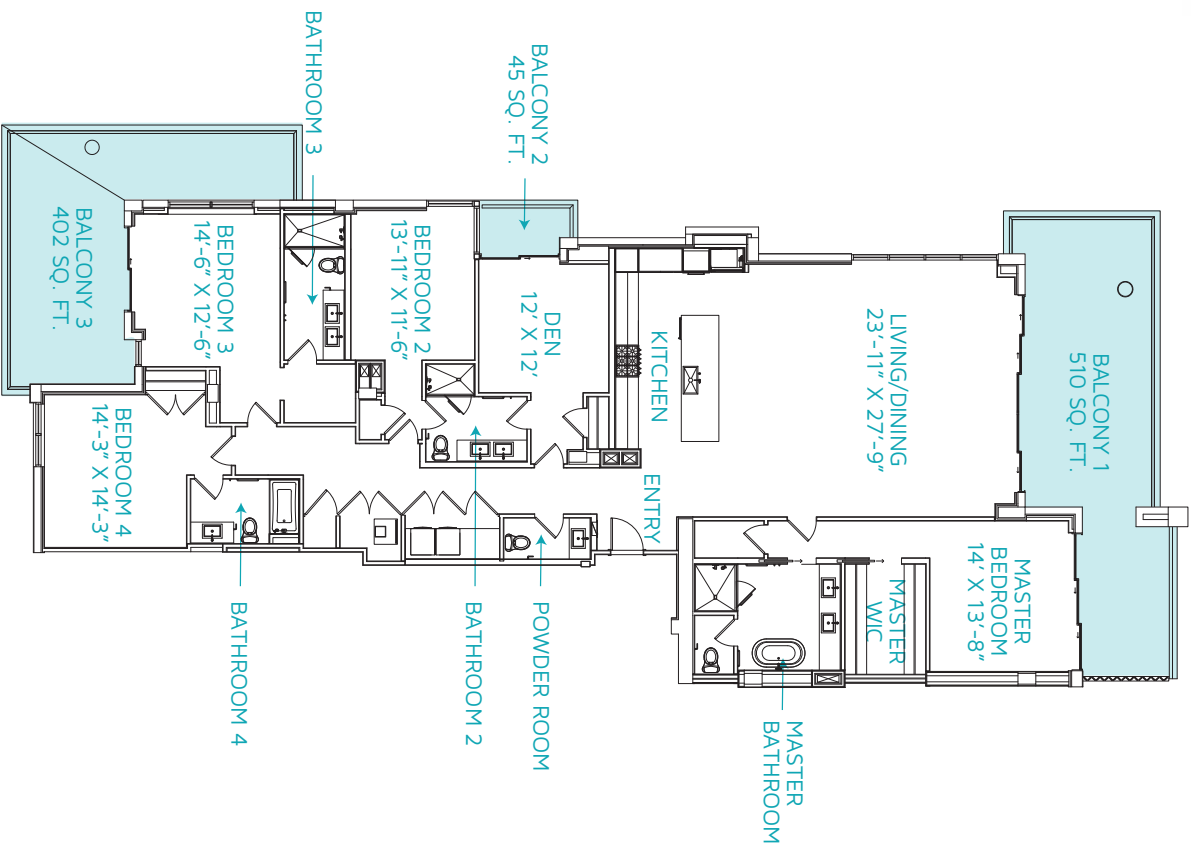
SECONDARY BEDROOMS & BATHS

- 1 ¼"-thick Statuarietto white marble, honed-finish countertop
- Waterworks Flyte series plumbing fixtures and accessories
- Toto Drake II toilet
- Closet with custom built-in shelving system

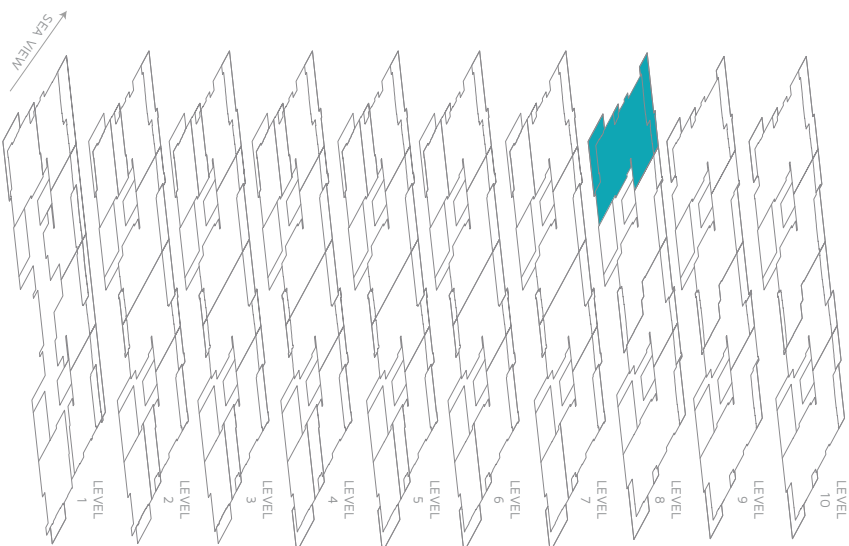
4B-2 Your eligibility for purchase will depend on your state of residency. This is not intended to be an offer to sell nor a solicitation of offers to buy real estate and/or securities to residents of any jurisdiction unless exemptions from registration are available in the applicable jurisdiction.

FLOOR PLAN

 Balcony



S802	LEVEL 8 4 BEDROOM/ 4.5 BATH	Total sq. ft. - 4,075 Unit sq. ft. - 3,118 Terraces sq. ft. - 957	Warm Interior Palette
-------------	-----------------------------------	--	-----------------------------



S802

FEATURES

- Interior design by Guerin Glass Architects
- Direct entry into open kitchen and great room
- Hurricane-rated aluminium doors and windows
- 10' 10" ceiling

UTILITIES

- 100% backup power via dedicated 750 kVA generator
- 27% reduction in energy usage over baseline comparison
- Gas tankless water heater

GREAT ROOM & TERRACES

- Stacking, sliding doors that maximise open space to the terrace
- Lindsey Adelman chandeliers
- Modernist ceiling fans

KITCHEN

- Guerin Glass custom-designed cabinets with soft-close hardware
- 1 ¼"-thick Statuarietto white marble, honed-finish countertop
- ¾"-thick Statuarietto white marble, honed-finish backsplash
- Kohler Purist series faucet
- Stainless steel undermount sink with ¾ HP garbage disposal
- Miele 24" fully integrated dishwasher
- Sub-Zero 36" built-in over-and-under fridge/freezer with icemaker
- Sub-Zero 24" undercounter wine refrigerator (46-bottle capacity)
- Sub-Zero 24" refrigerated/beverage drawers
- Miele 30" 5-burner gas cooktop with stainless steel finish and frame and hood
- Miele 30" stainless steel, built-in wall cabinet hood
- Miele 30" PureLine series convection oven
- Miele 30" PureLine series warming drawer
- Miele 24" PureLine series microwave
- Miele 24" plumbed and built-in coffee maker

LAUNDRY

- LG Ultra Large 4.3 cu. ft. frontload washer
- LG Steam Dryer 7.4 cu. ft. frontload gas dryer

MASTER SUITE & BATH

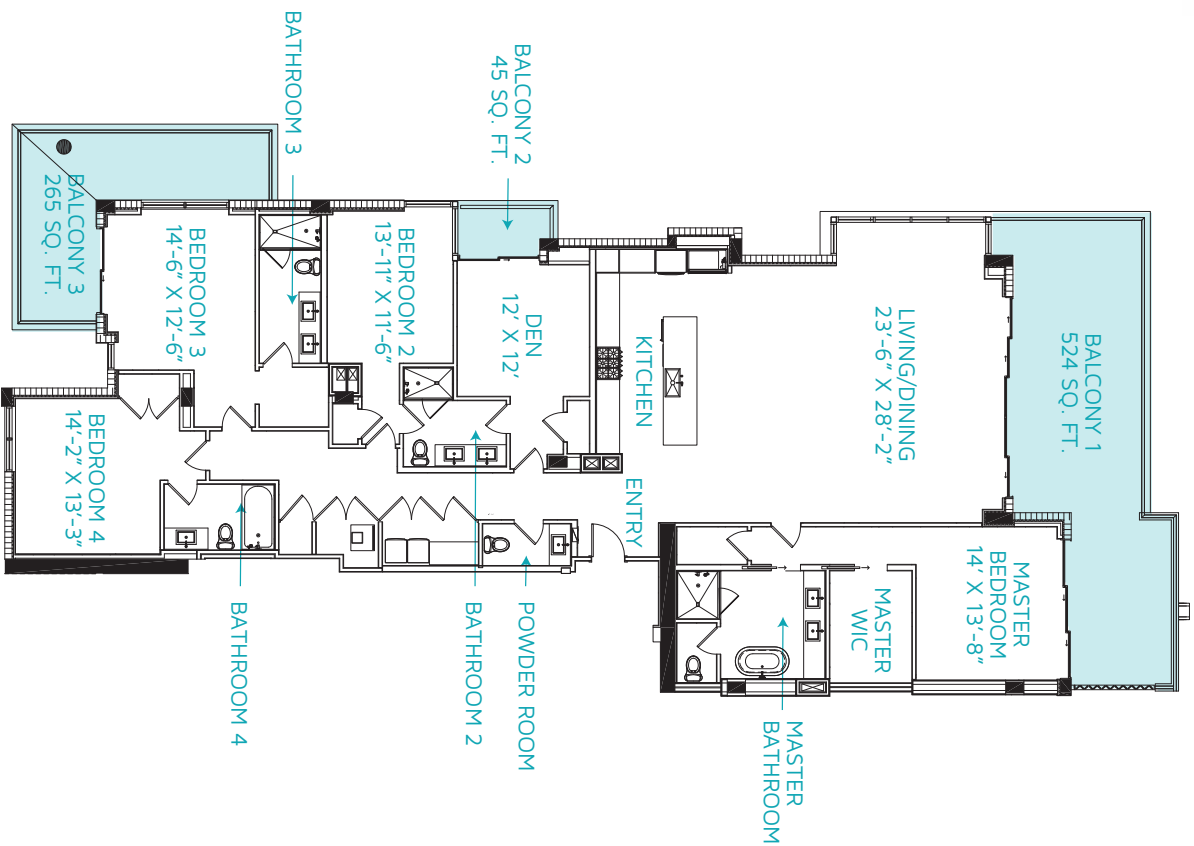
- Custom feature wall in suite and bath
- Walk-in closet with custom built-in shelving system
- Waterworks Flyte series plumbing fixtures and accessories
- Kohler Ladena series undermount sink
- Neptune Amaze series free-standing soaking bathtub
- 1 ¼"-thick Statuarietto white marble, honed-finish countertop
- Toto Drake II toilet in separate water closet

SECONDARY BEDROOMS & BATHS

- 1 ¼"-thick Statuarietto white marble, honed-finish countertop
- Waterworks Flyte series plumbing fixtures and accessories
- Toto Drake II toilet
- Closet with custom built-in shelving system

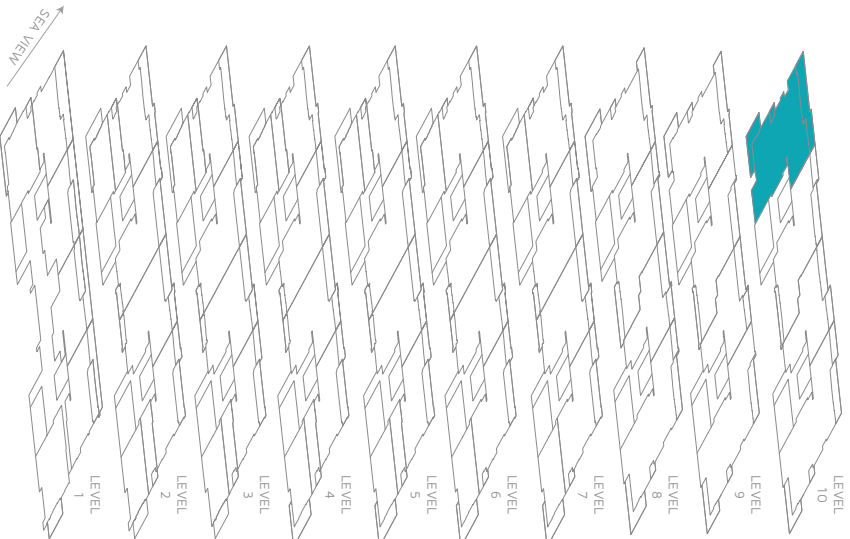
4B-1 Your eligibility for purchase will depend on your state of residency. This is not intended to be an offer to sell nor a solicitation of offers to buy real estate and/or securities to residents of any jurisdiction unless exemptions from registration are available in the applicable jurisdiction.

FLOOR PLAN



Balcony

S1002	LEVEL 10 4 BEDROOM + DEN/4.5 BATH	Total sq. ft. - 4,016 Unit sq. ft. - 3,182 Terraces sq. ft. - 834	Warm Interior Palette
--------------	---	--	-----------------------------



S1002

FEATURES

- Interior design by Guerin Glass Architects
- Direct entry into open kitchen and great room
- Hurricane-rated aluminium doors and windows
- 10' 10" ceiling

UTILITIES

- 100% backup power via dedicated 750 kVA generator
- 27% reduction in energy usage over baseline comparison
- Gas tankless water heater

GREAT ROOM & TERRACES

- Stacking, sliding doors that maximise open space to the terrace
- Lindsey Adelman chandeliers
- Modernist ceiling fans

KITCHEN

- Guerin Glass custom-designed cabinets with soft-close hardware
- 1 ¼"-thick Statuarietto white marble, honed-finish countertop
- ¾"-thick Statuarietto white marble, honed-finish backsplash
- Kohler Purist series faucet
- Stainless steel undermount sink with ¾ HP garbage disposal
- Miele 24" fully integrated dishwasher
- Sub-Zero 36" built-in over-and-under fridge/freezer with icemaker
- Sub-Zero 24" undercounter wine refrigerator (46-bottle capacity)
- Sub-Zero 24" refrigerated/beverage drawers
- Miele 30" 5-burner gas cooktop with stainless steel finish and frame and hood
- Miele 30" stainless steel, built-in wall cabinet hood
- Miele 30" PureLine series convection oven
- Miele 30" PureLine series warming drawer
- Miele 24" PureLine series microwave
- Miele 24" plumbed and built-in coffee maker

LAUNDRY

- LG Ultra Large 4.3 cu. ft. frontload washer
- LG Steam Dryer 7.4 cu. ft. frontload gas dryer

MASTER SUITE & BATH

- Custom feature wall in suite and bath
- Walk-in closet with custom built-in shelving system
- Waterworks Flyte series plumbing fixtures and accessories
- Kohler Ladena series undermount sink
- Neptune Amaze series free-standing soaking bathtub
- 1 ¼"-thick Statuarietto white marble, honed-finish countertop
- Toto Drake II toilet in separate water closet

SECONDARY BEDROOMS & BATHS

- 1 ¼"-thick Statuarietto white marble, honed-finish countertop
- Waterworks Flyte series plumbing fixtures and accessories
- Toto Drake II toilet
- Closet with custom built-in shelving system

4B-1 Your eligibility for purchase will depend on your state of residency. This is not intended to be an offer to sell nor a solicitation of offers to buy real estate and/or securities to residents of any jurisdiction unless exemptions from registration are available in the applicable jurisdiction.